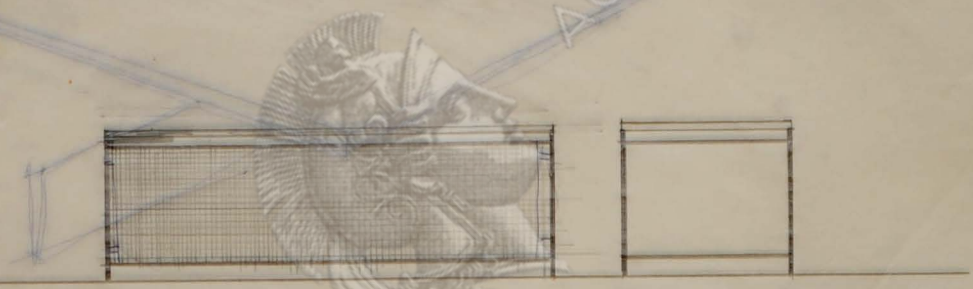
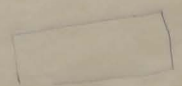


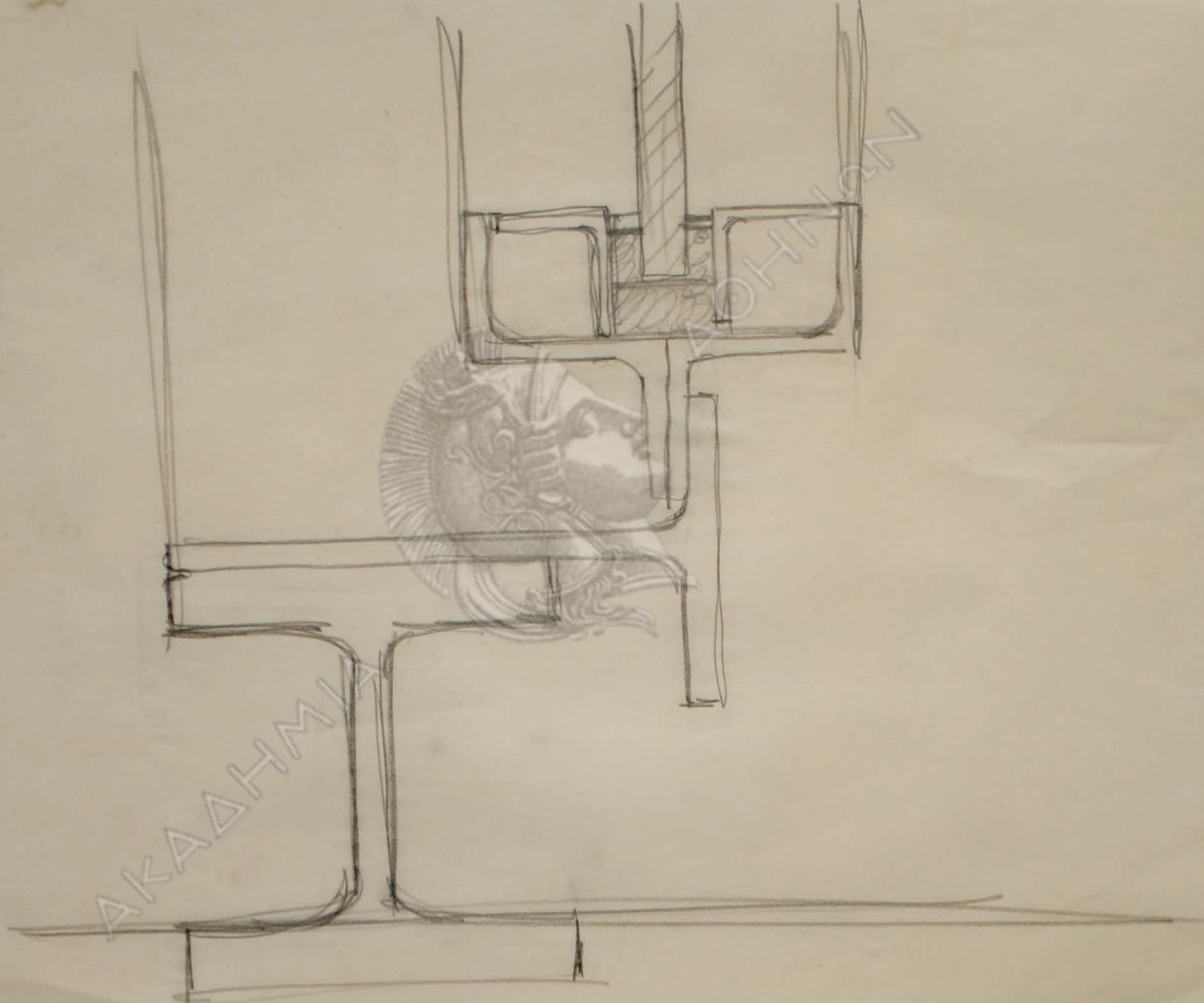
ΑΟΗΝΩΝ



ΑΚΑΔΗΜΙΑ

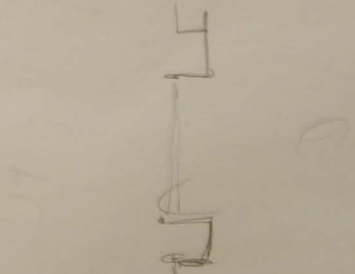
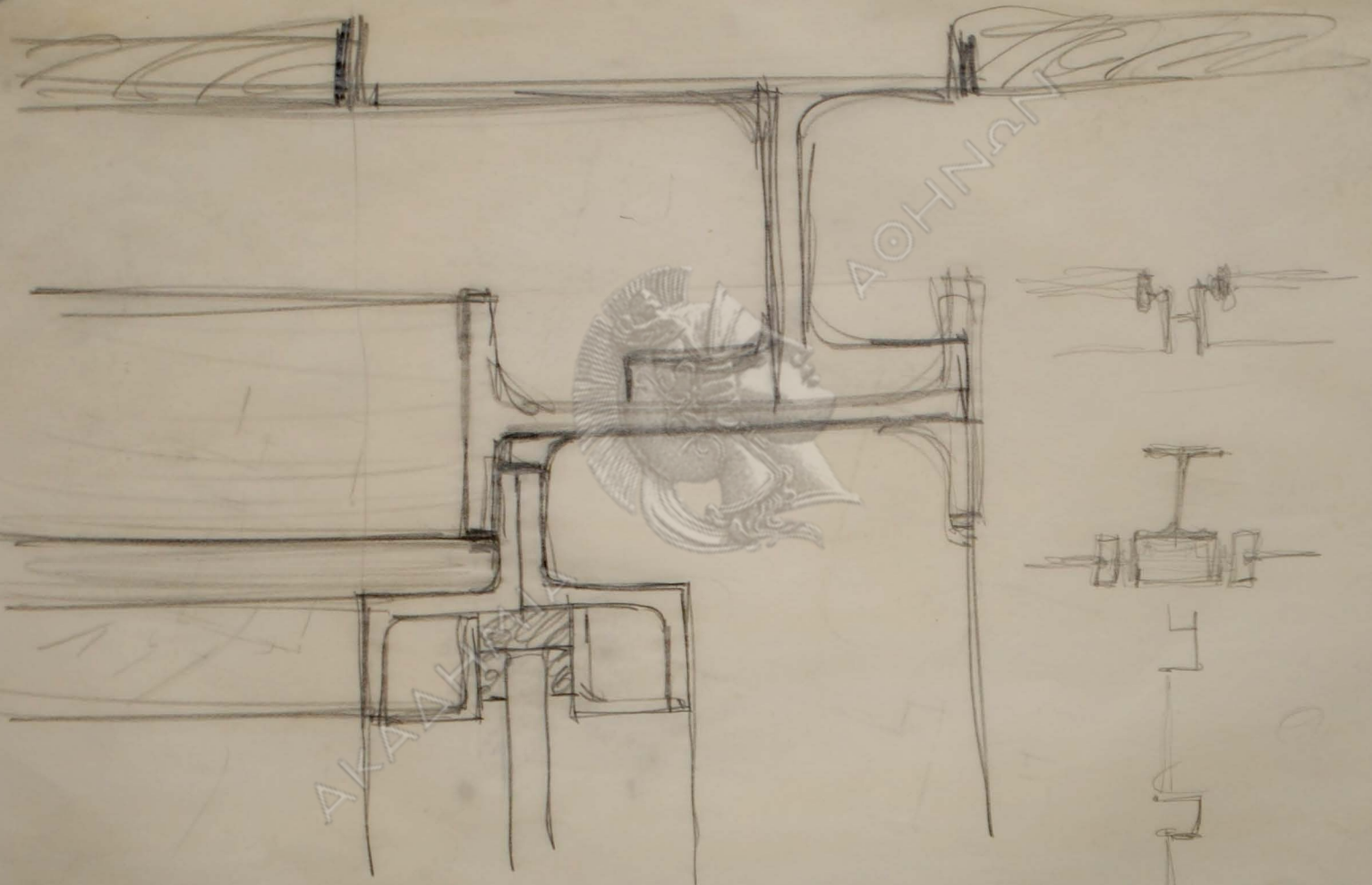
+





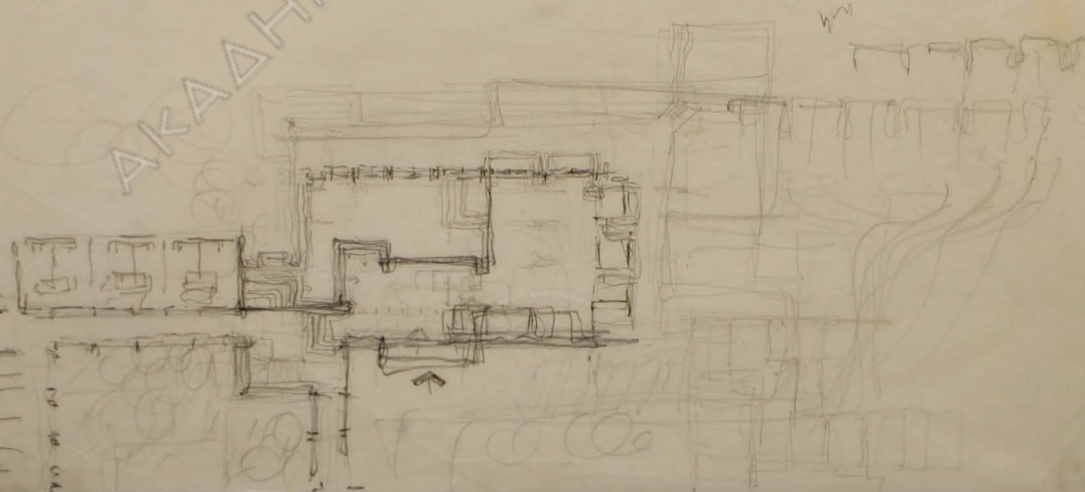
АКАДЕМИЯ

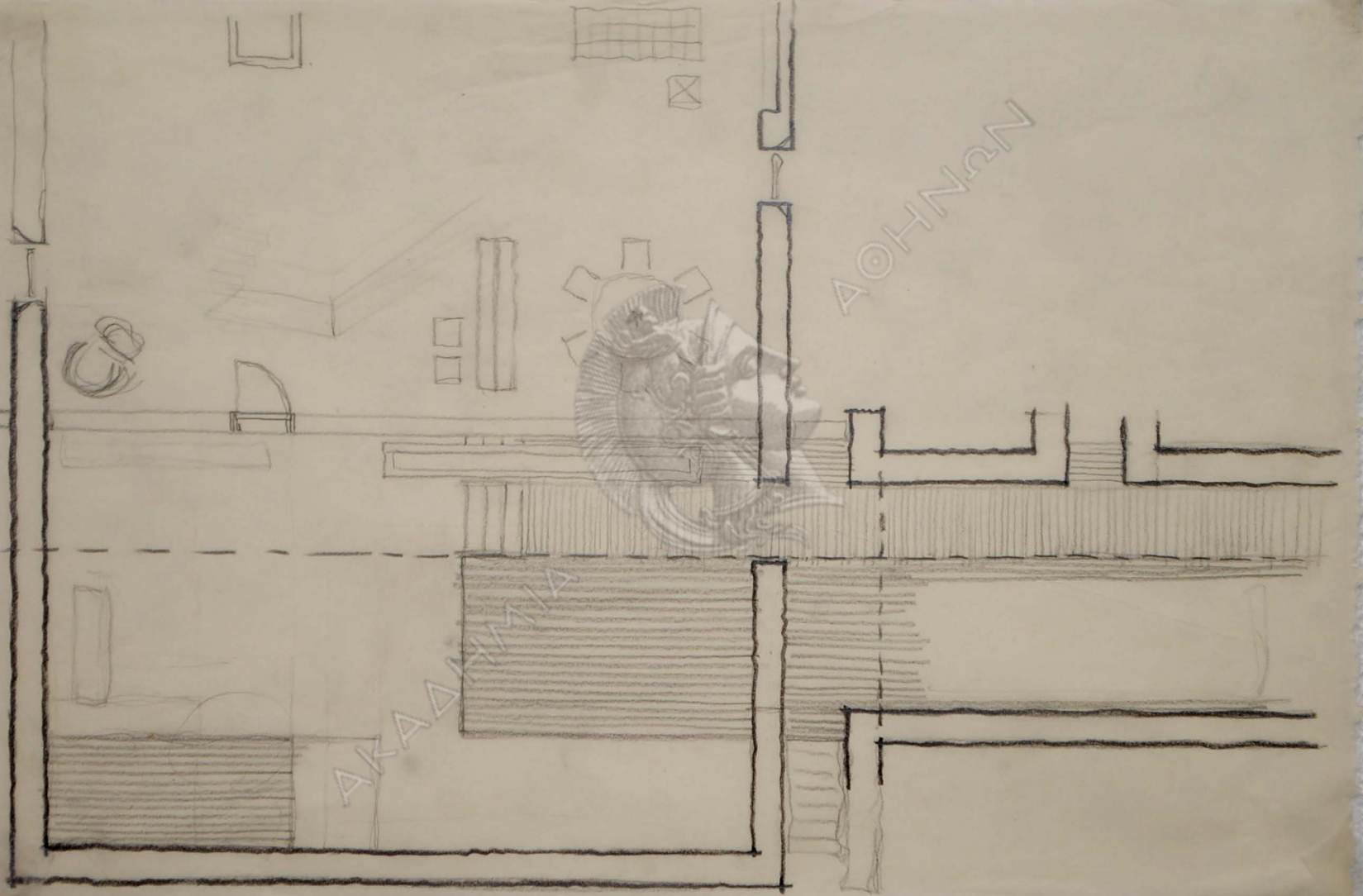
ИСТОРИЯ

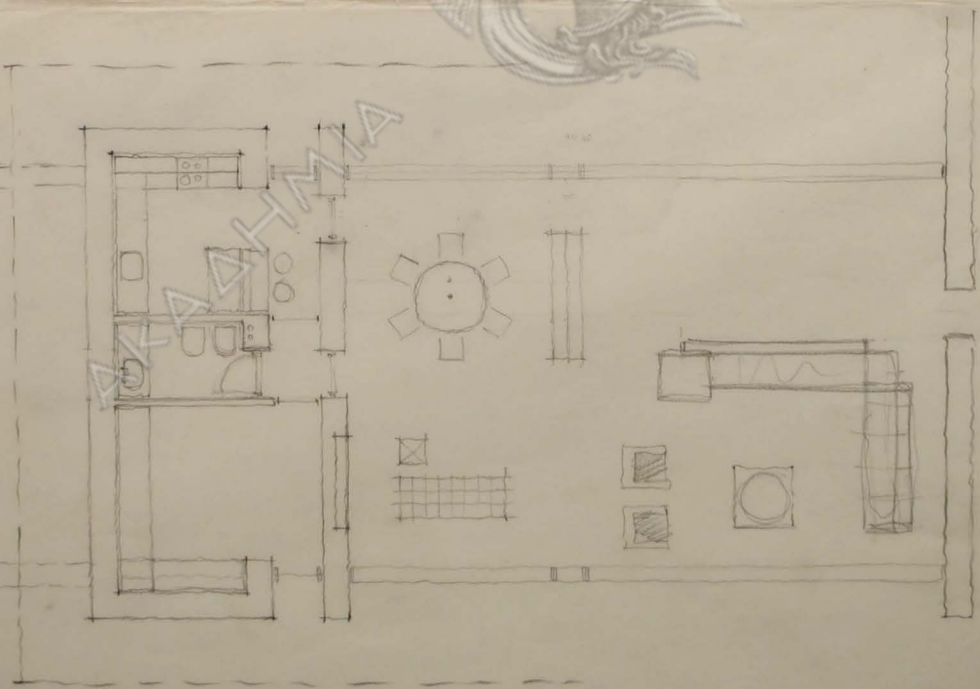
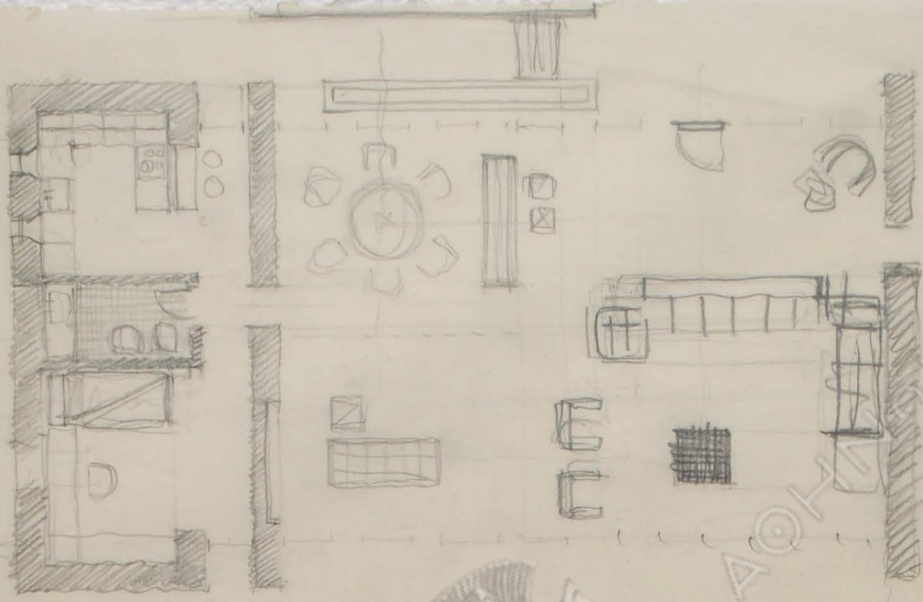


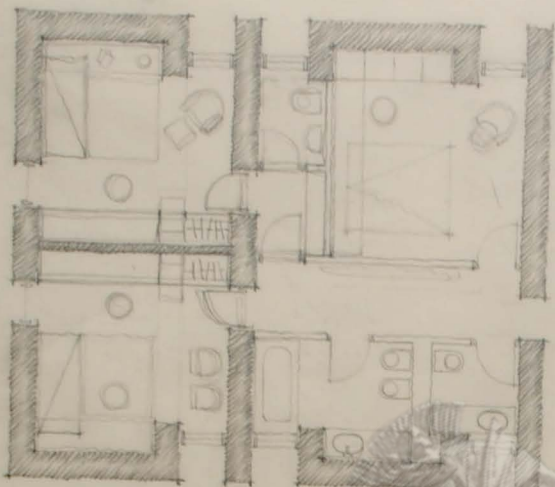
ΑΚΑΔΗΜΙΑ

ΑΘΗΝΑΝ



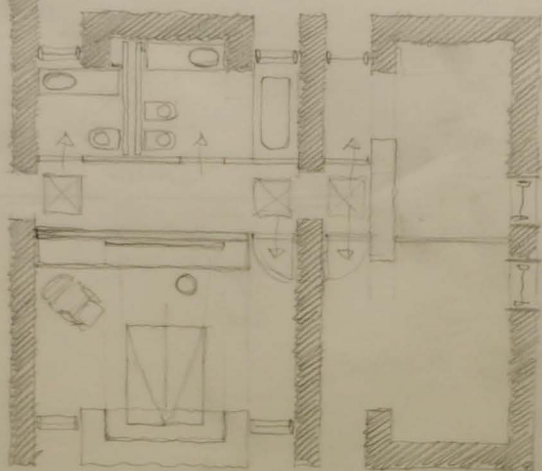


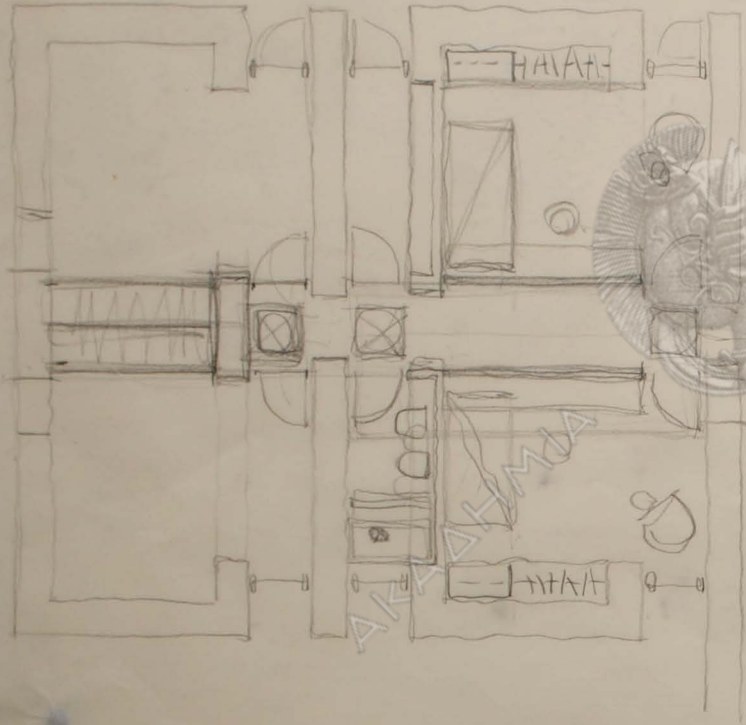




ΑΘΗΝΑΝ

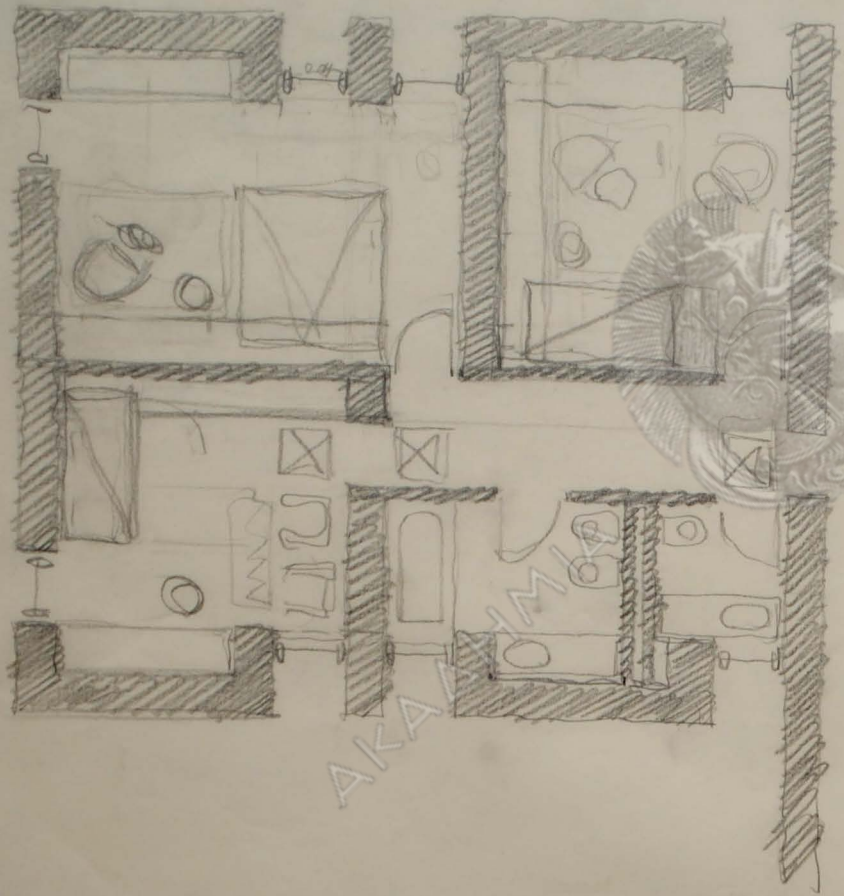
ΑΚΑΔΗΜΙΑ





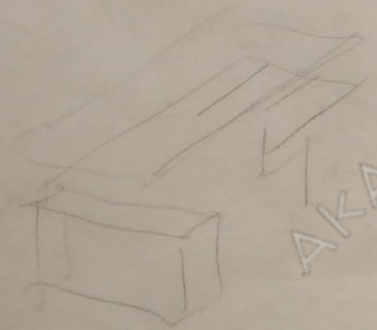
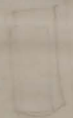
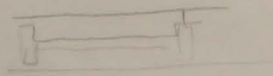
AKKADAMA

AKKADAMA



AKA
AKA

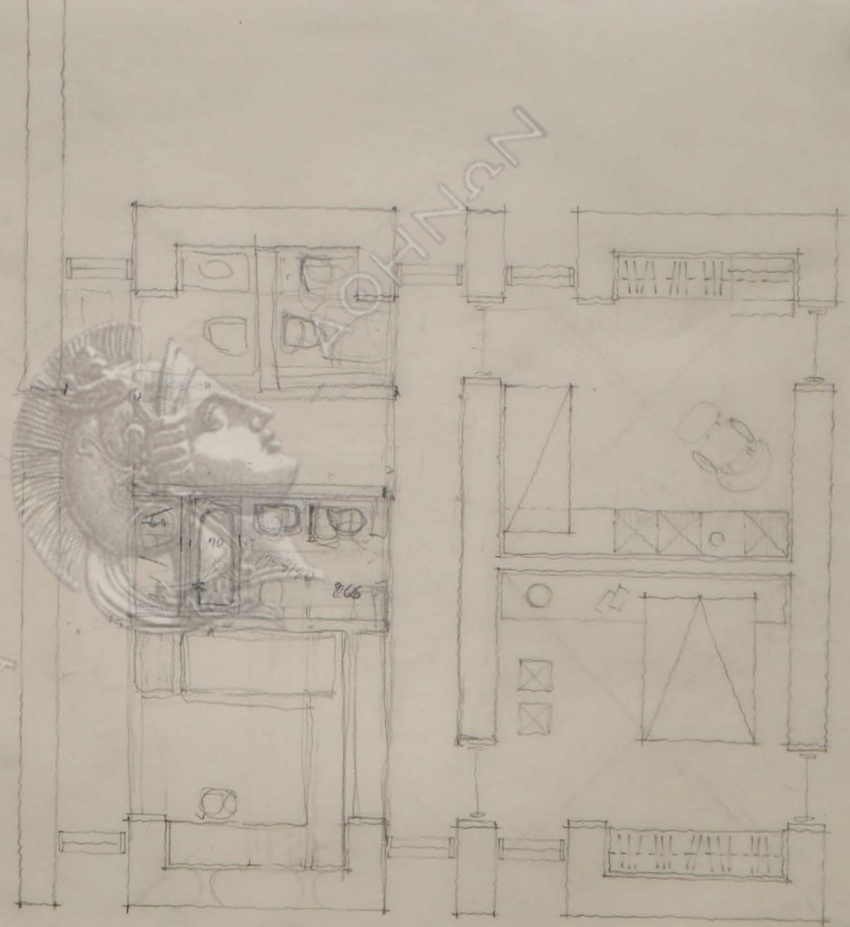
AKA

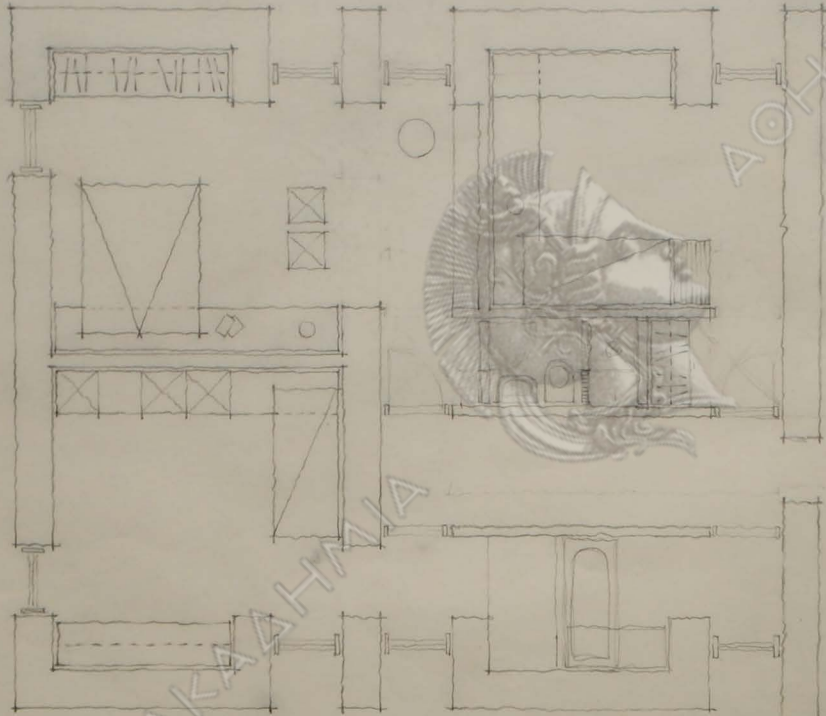


72
12
84

400
20
316
266

ΑΚΑΔΗΜΙΑ

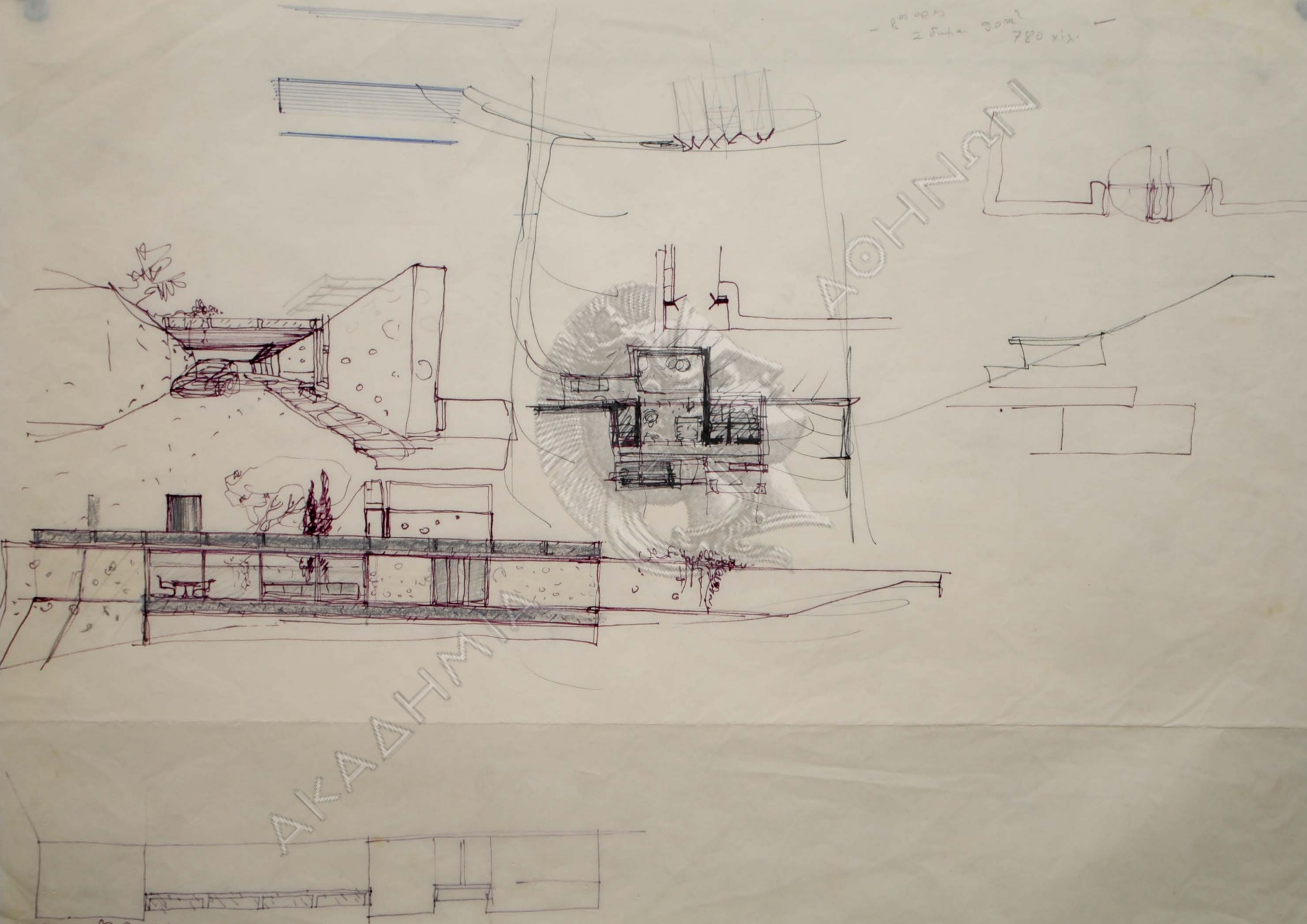


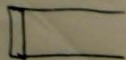
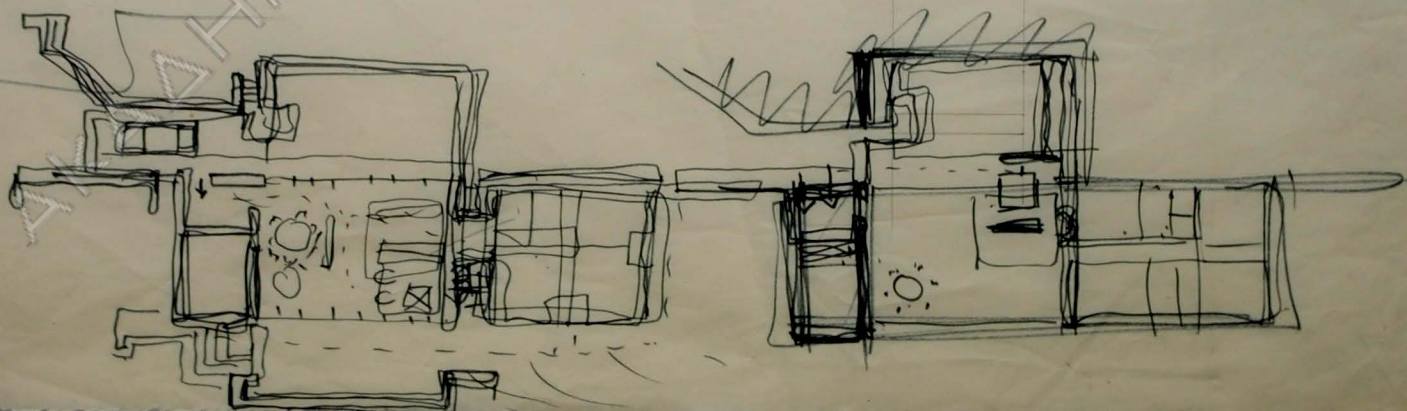
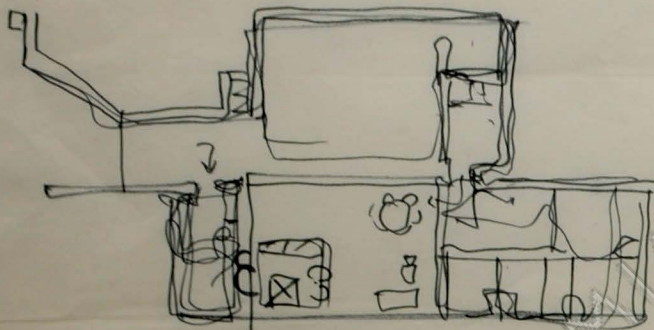
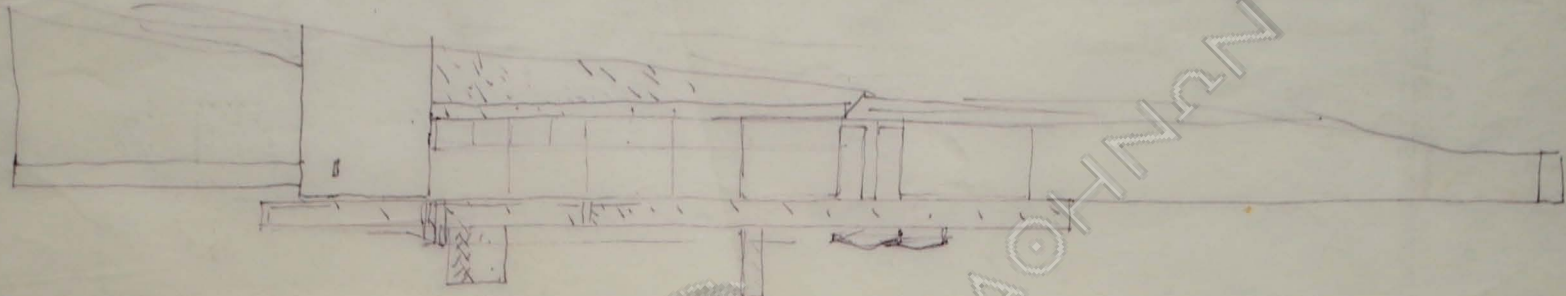


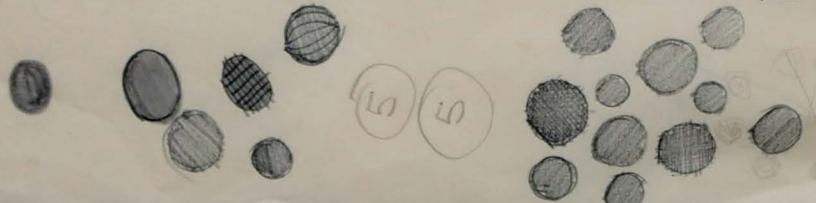
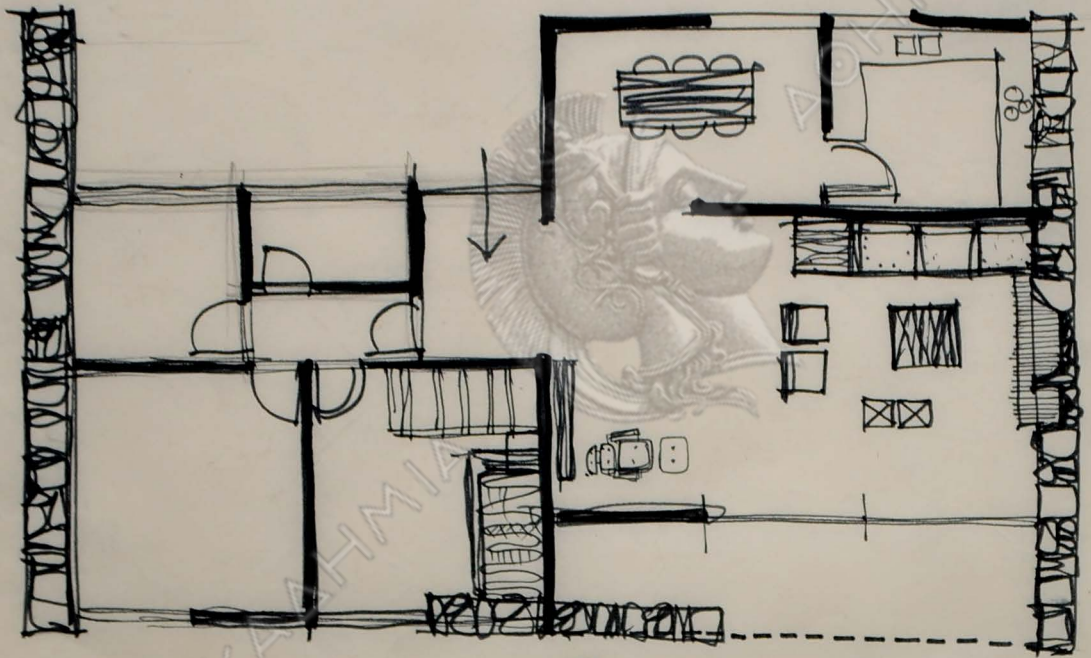
AKAASHVA

AKASHVA

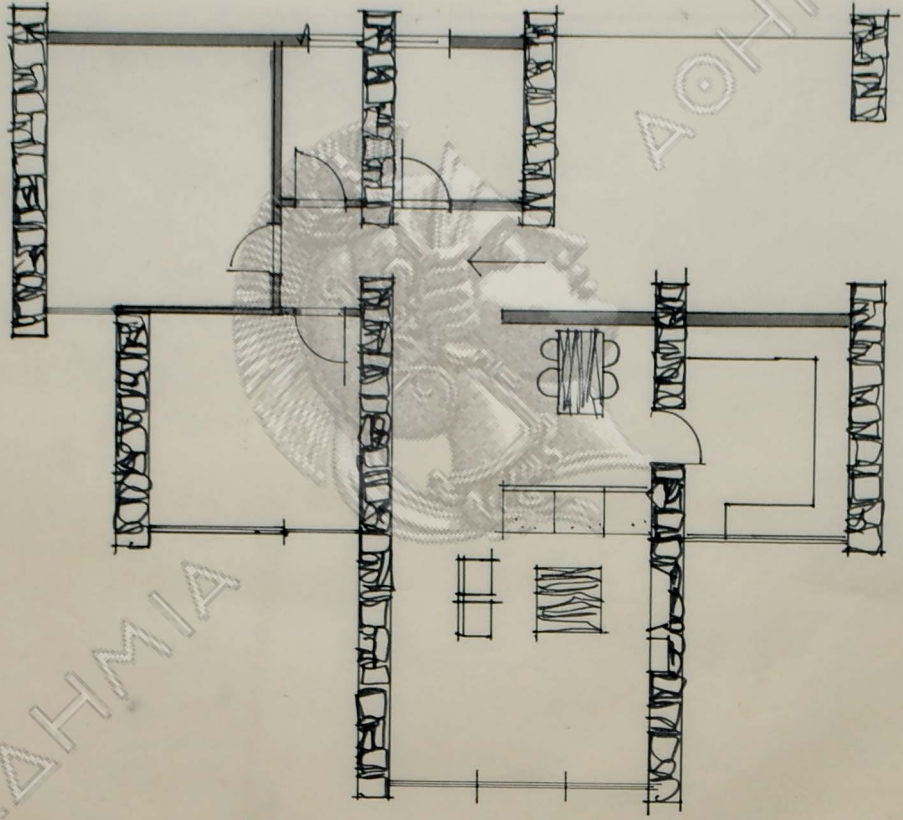
- 2000m²
25m x 30m
780 vix.







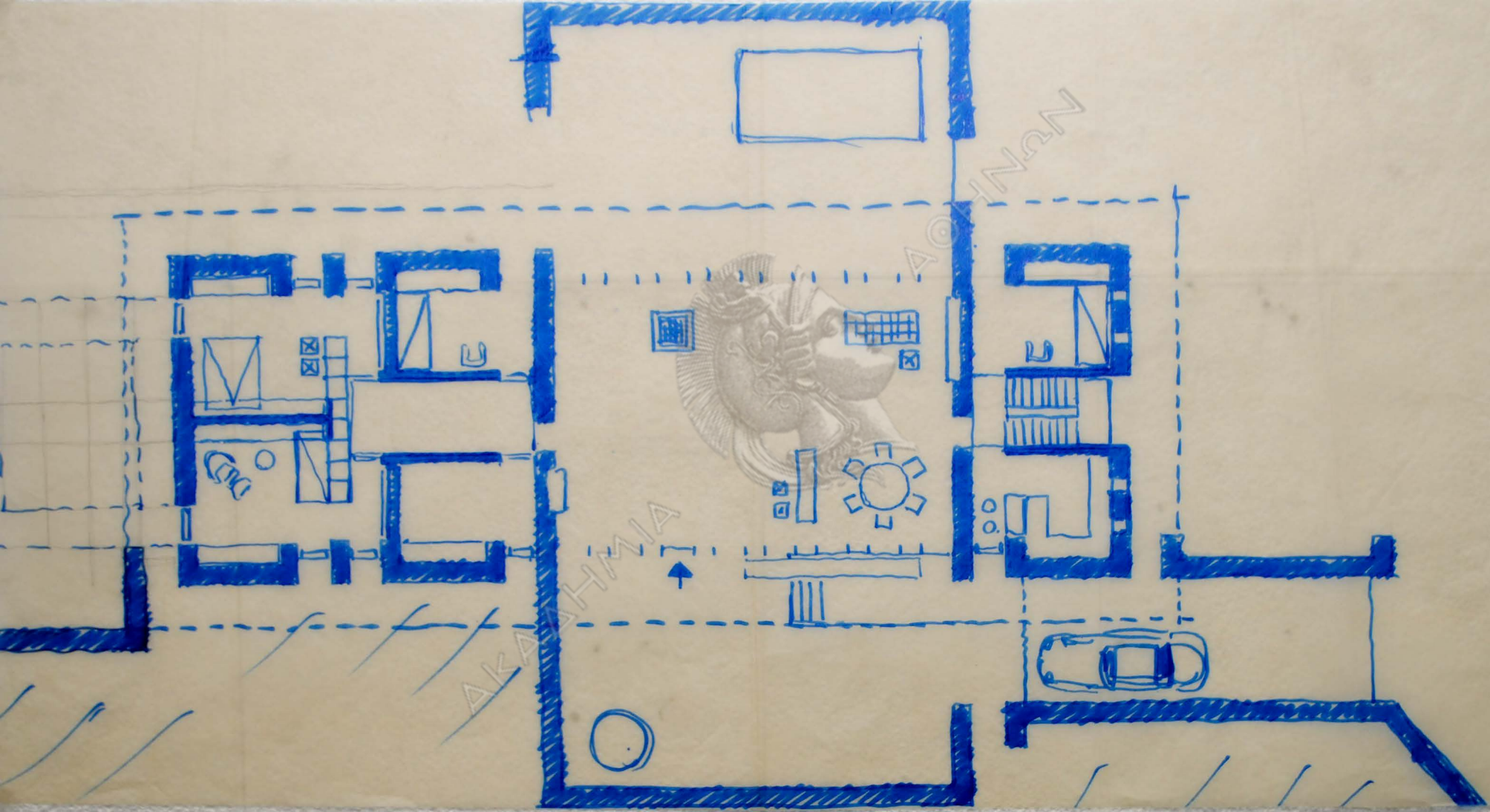
AKRATMIKA

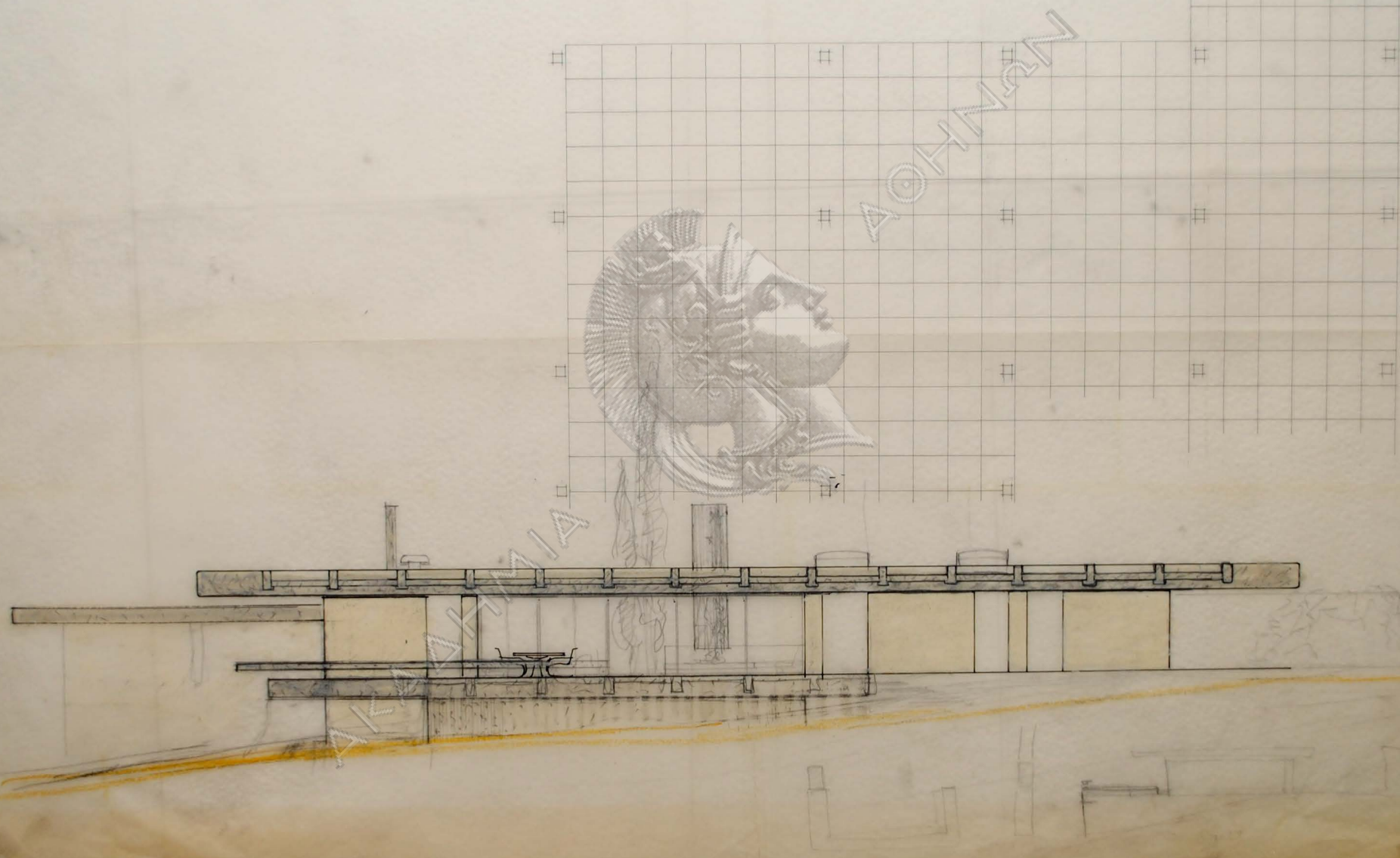


AKAΔHMIA

JOHNAN

ΚΑΤΟΨΙΣ ΚΑ: 1/50

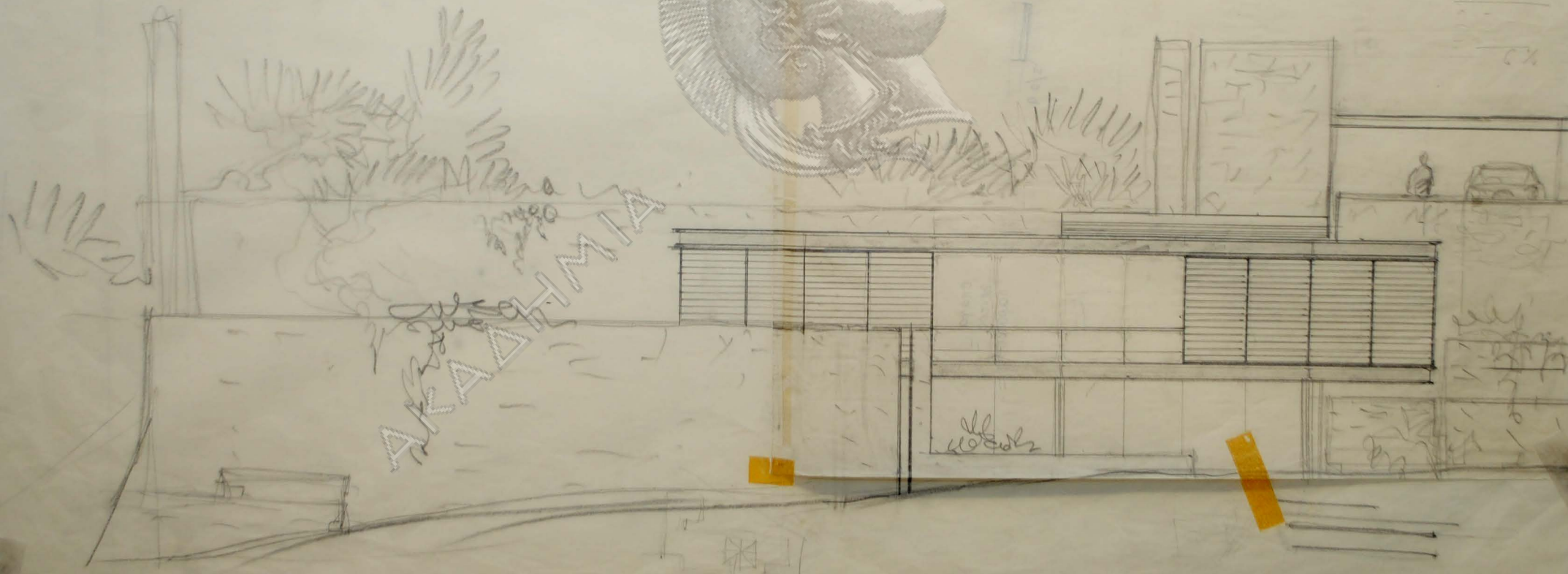


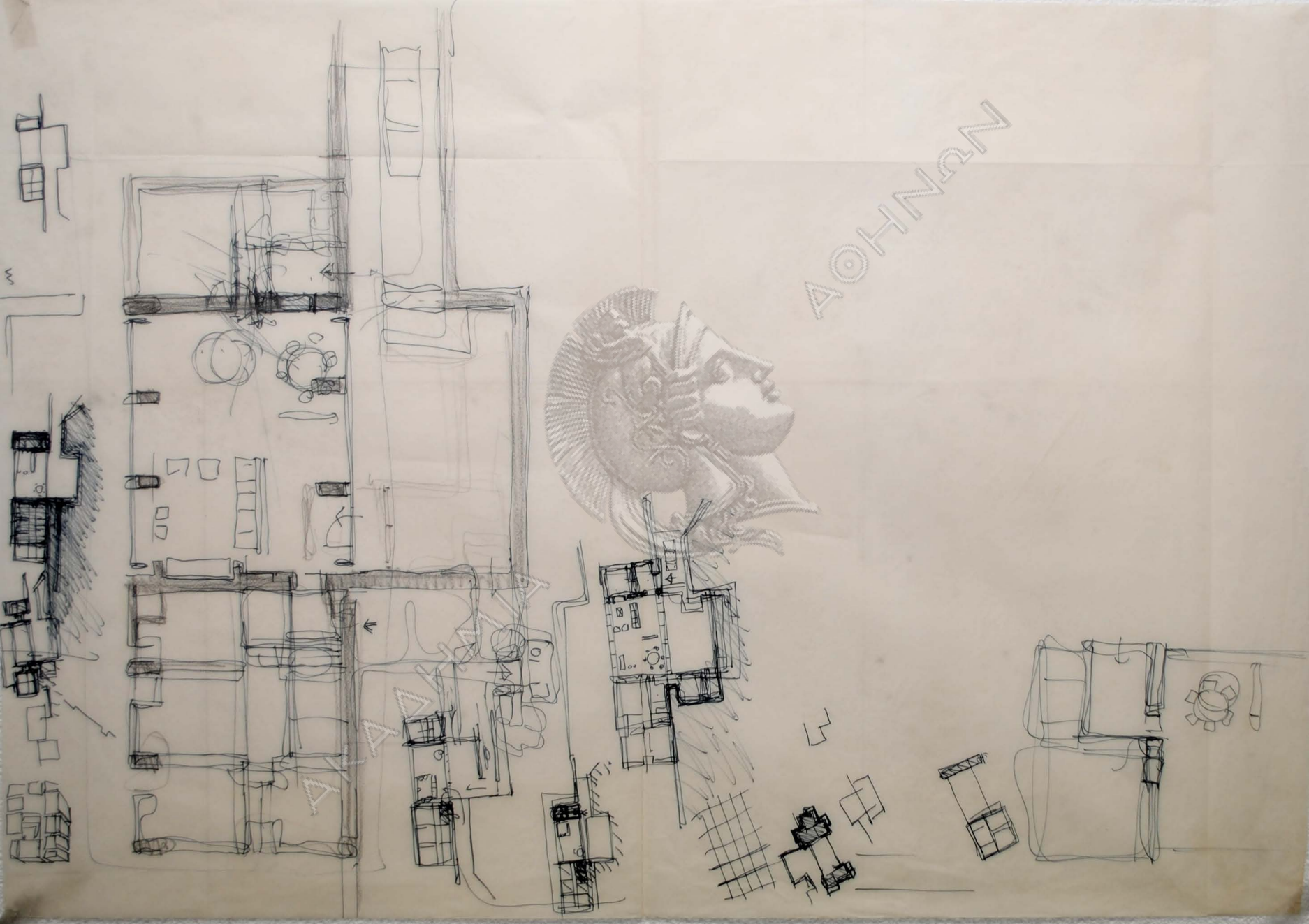


JOHANN

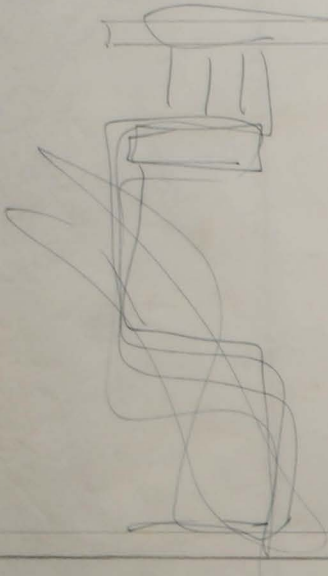


AKADEMIA



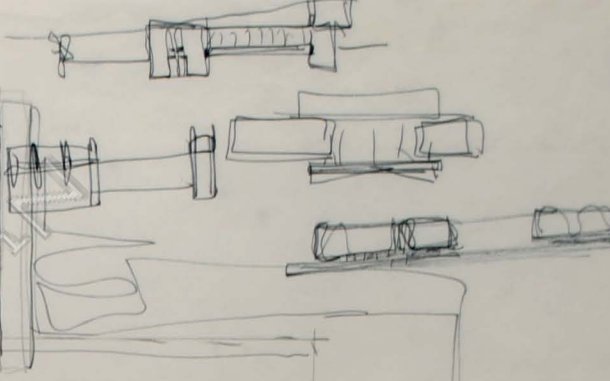
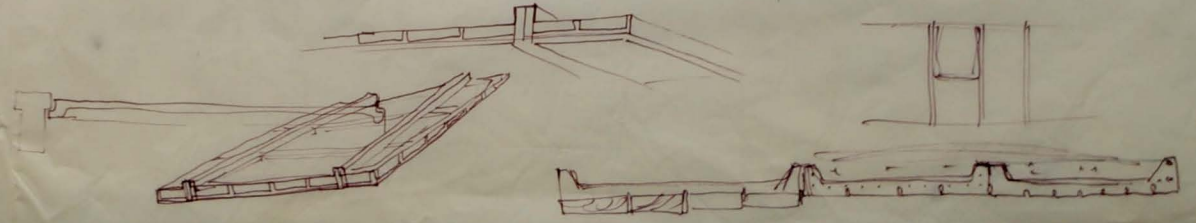
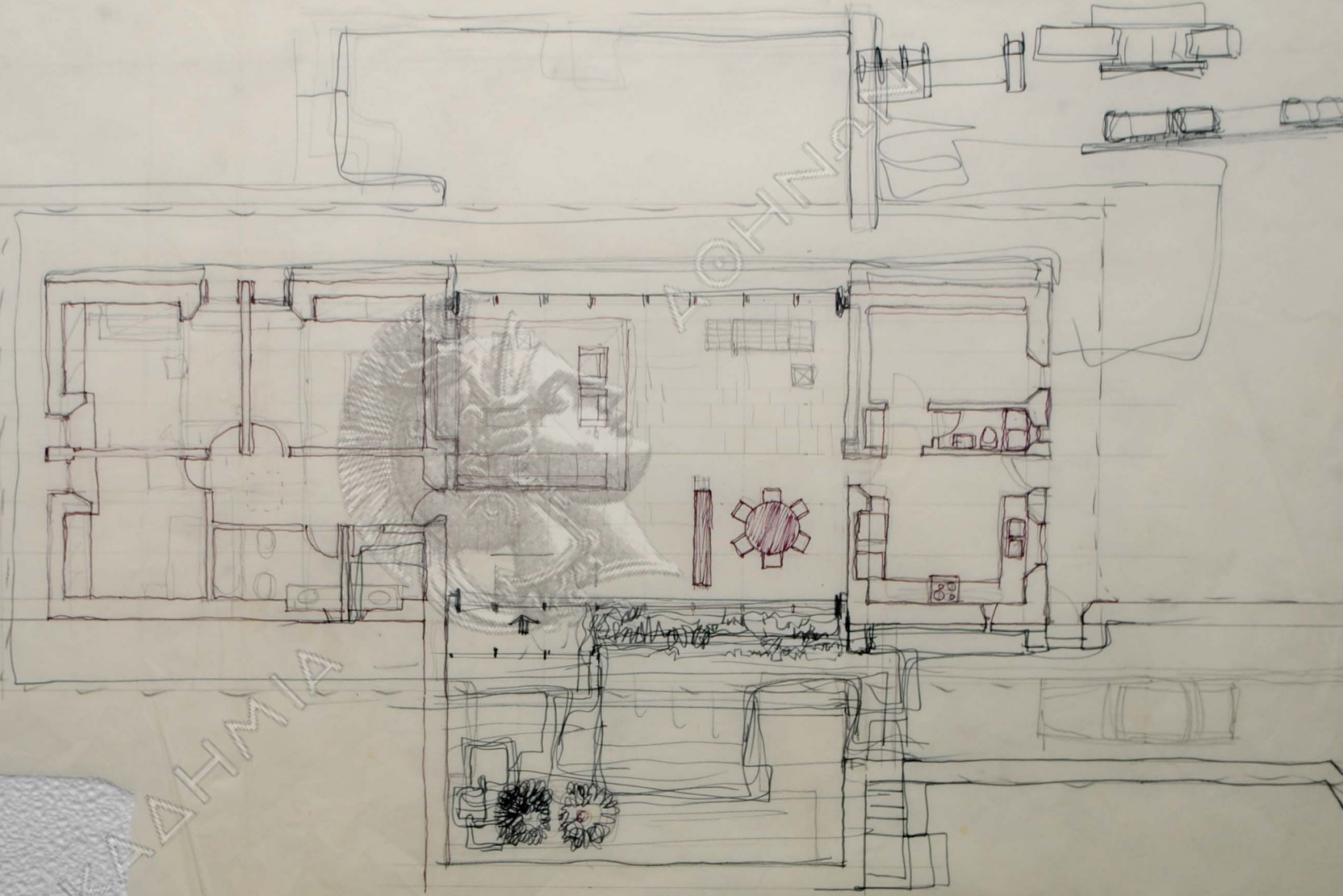


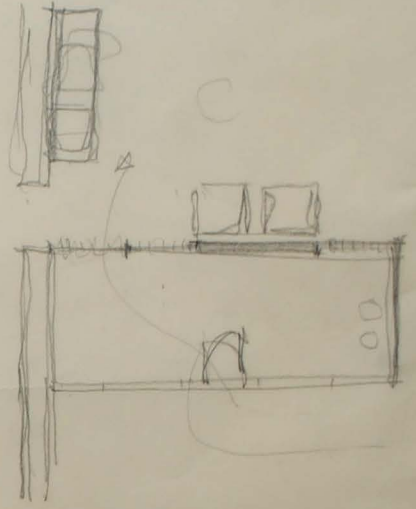
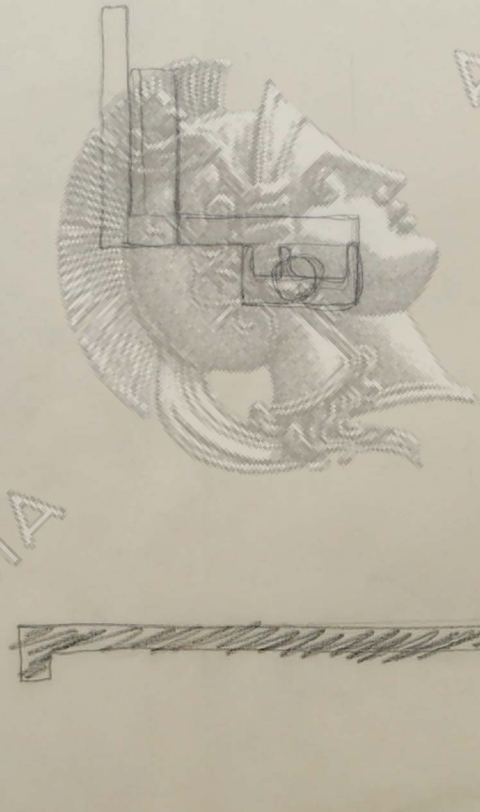
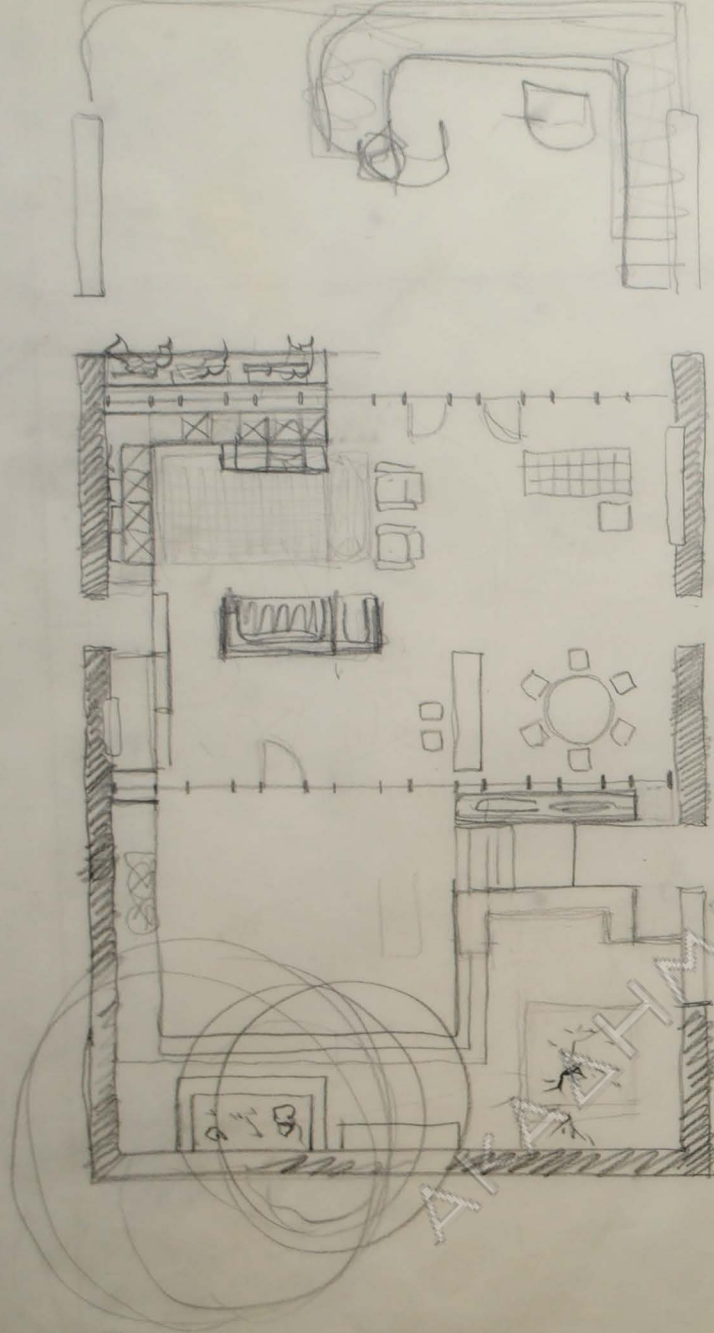
A O H N A N



20
72

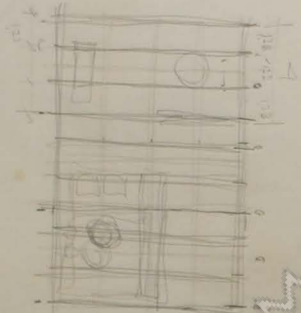
AKAΔHMIA



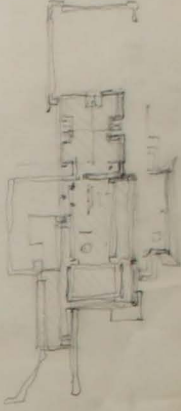
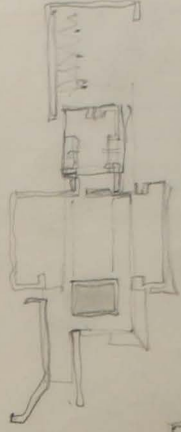
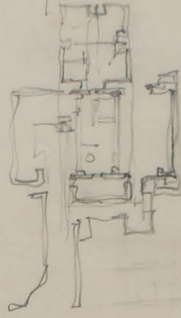
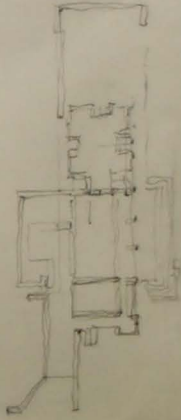
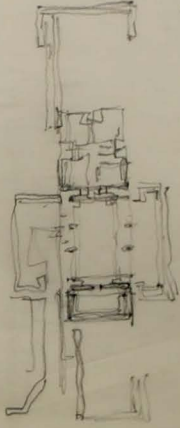
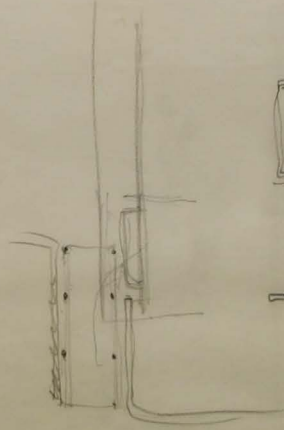
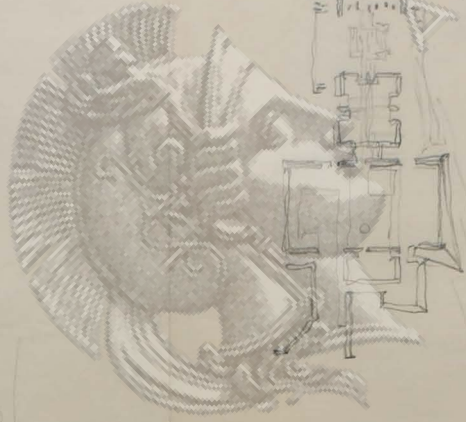


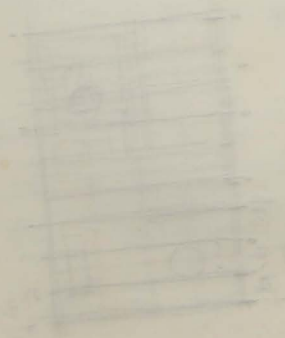
JOHNAN

ANTHIA



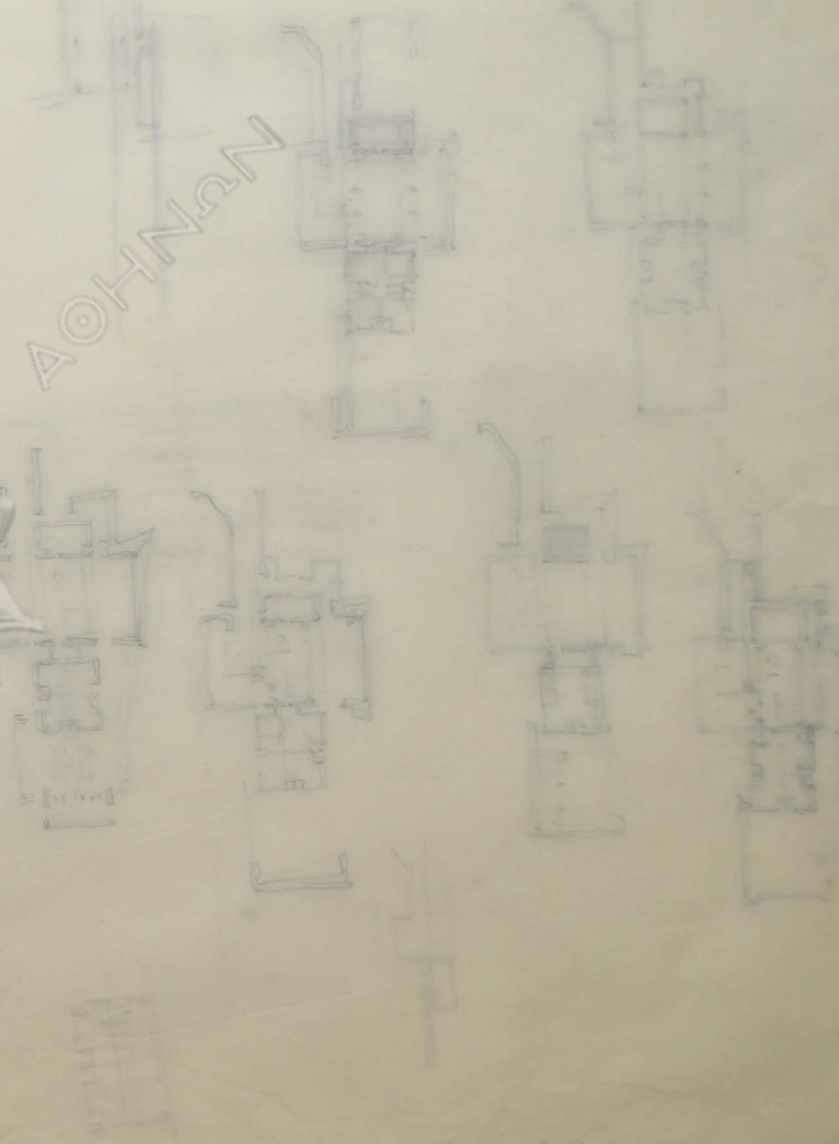
AKAΔHMIA





ΑΚΑΔΗΜΙΑ

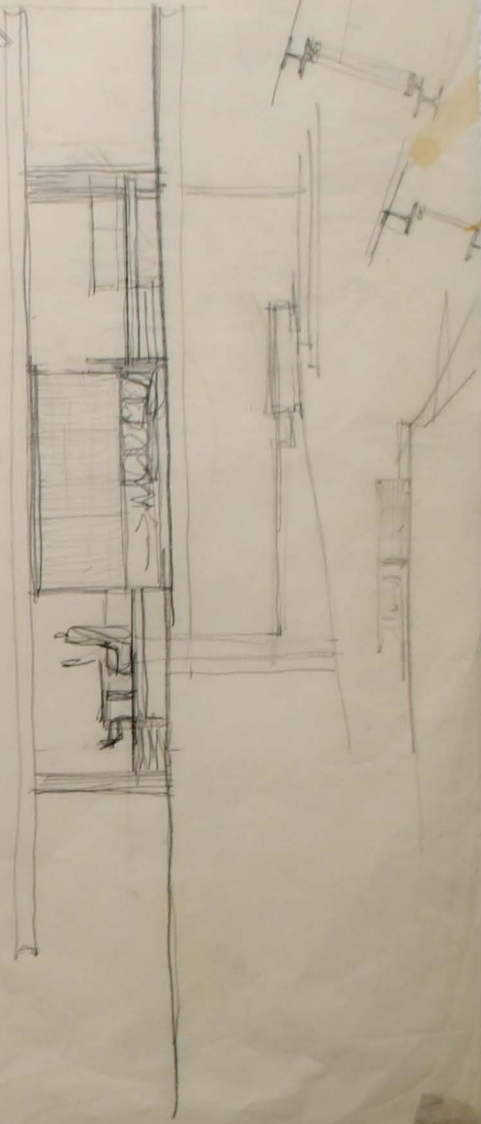
ΑΘΗΝΑΝ



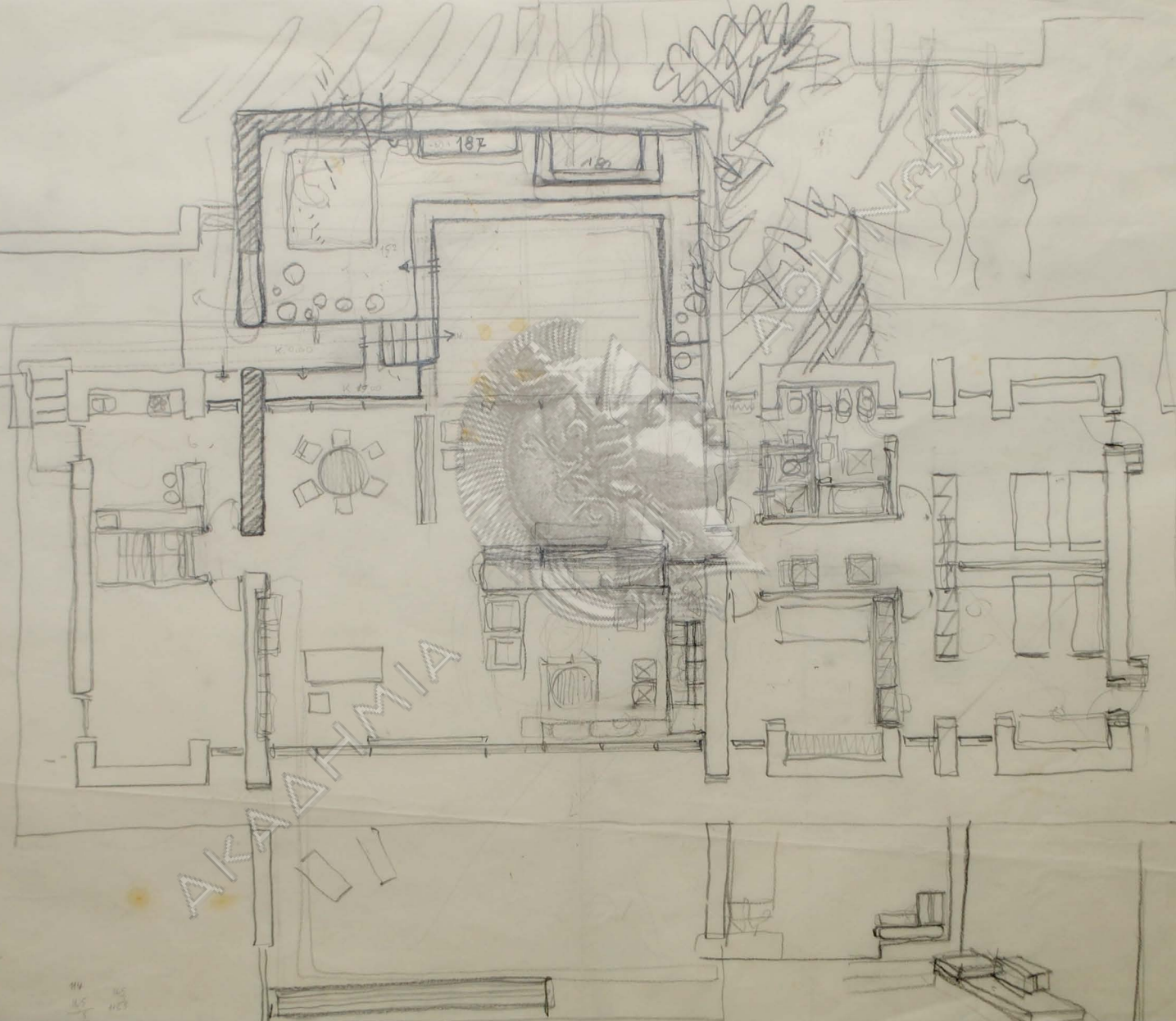
ΑΚΑΔΗΜΙΑ



ΑΘΗΝΑΝ



59/5
506

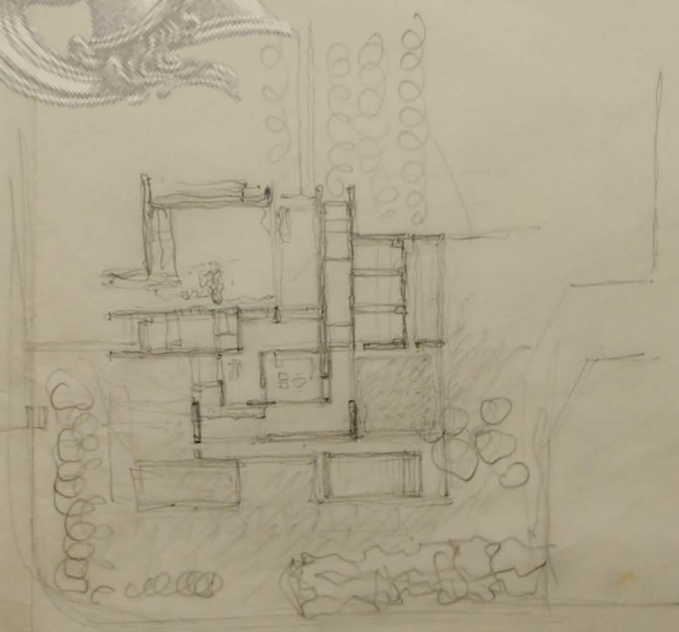
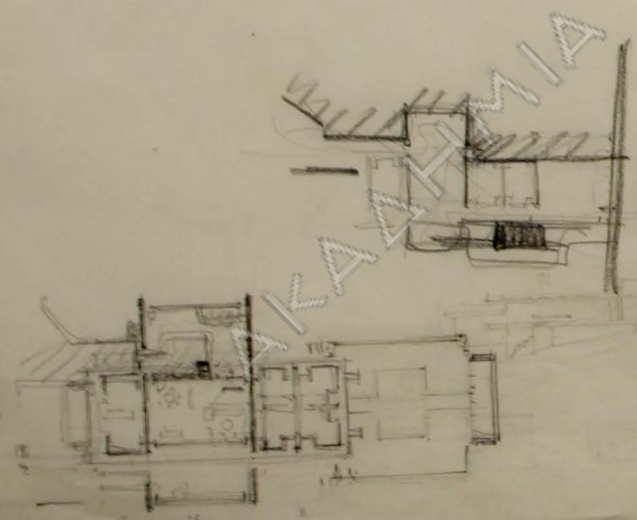


225 m²

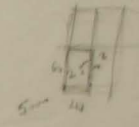
AKADEMIA

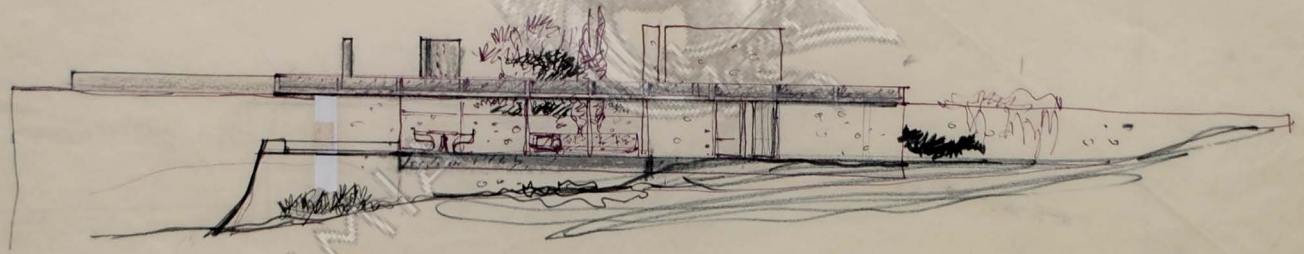
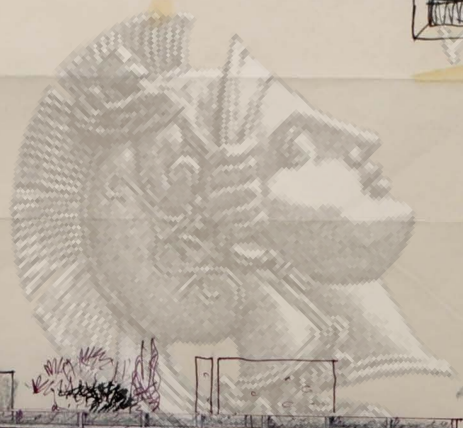
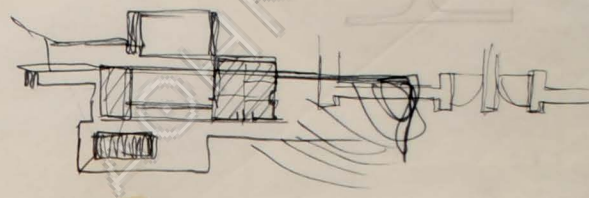
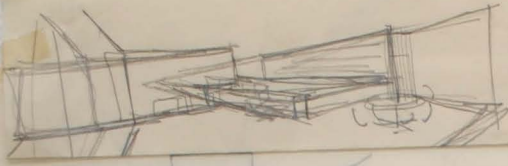
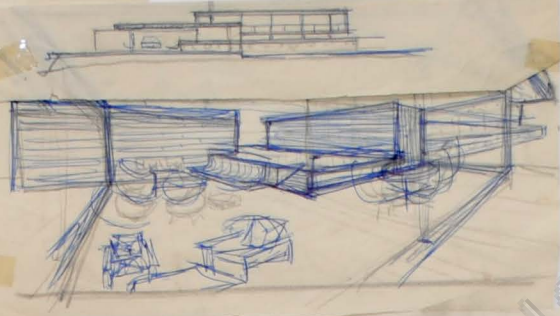
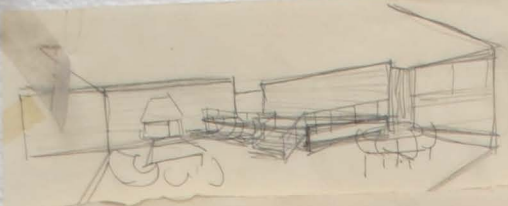
135
117
116

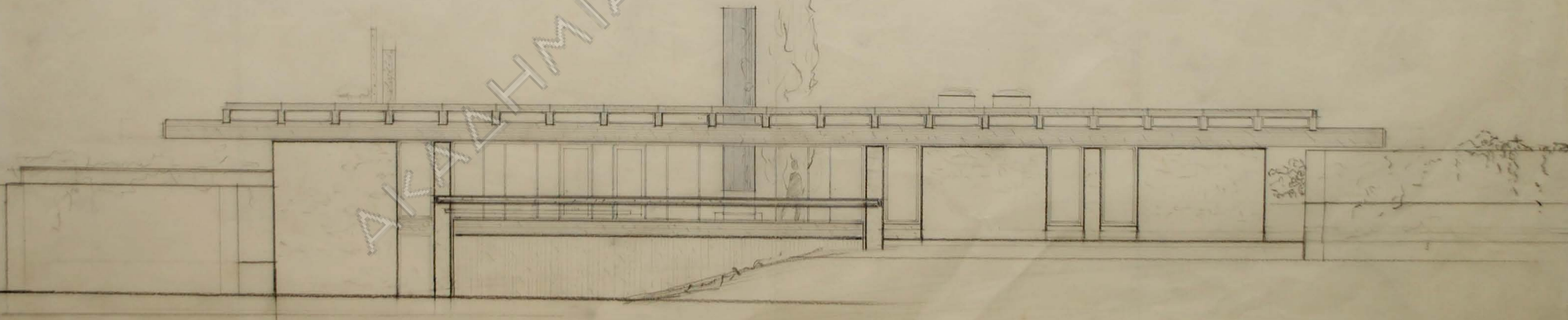
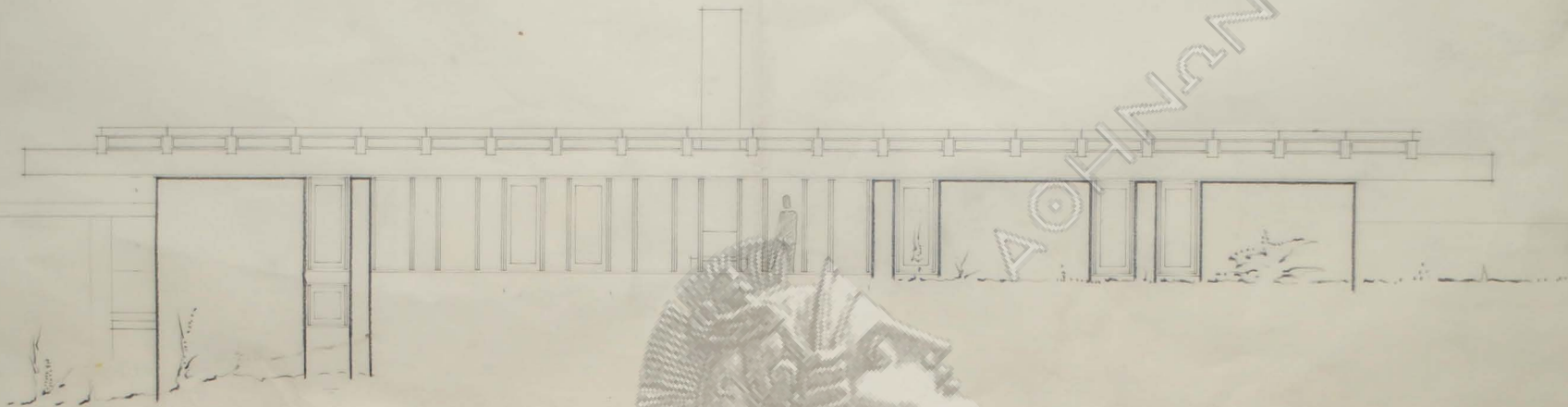
114
115
113



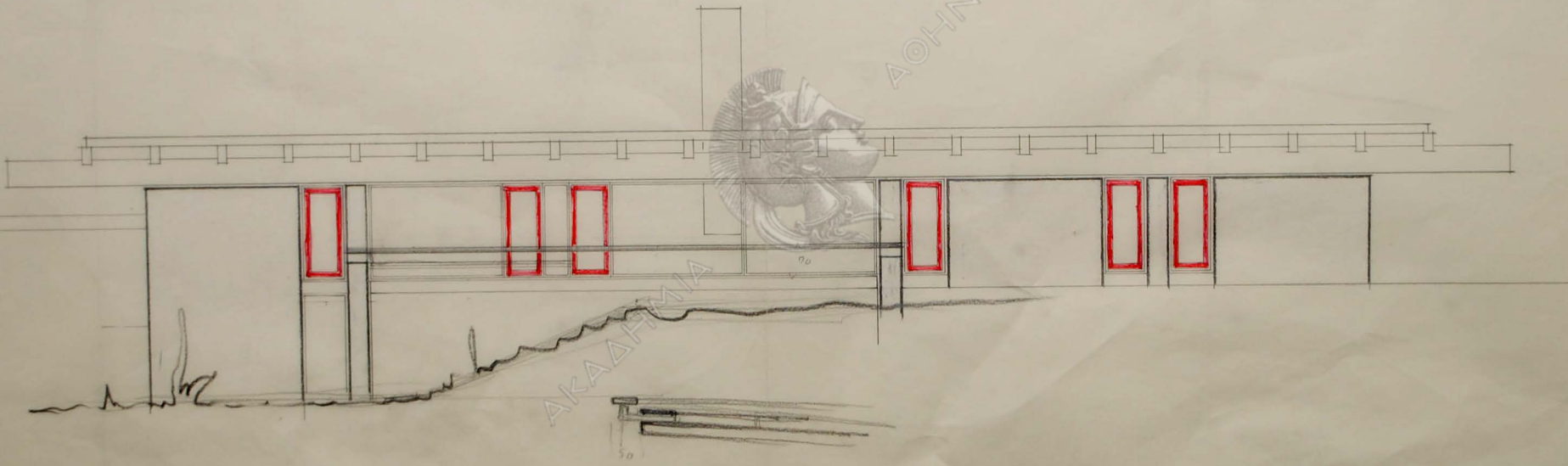
ΑΘΗΝΑΝ

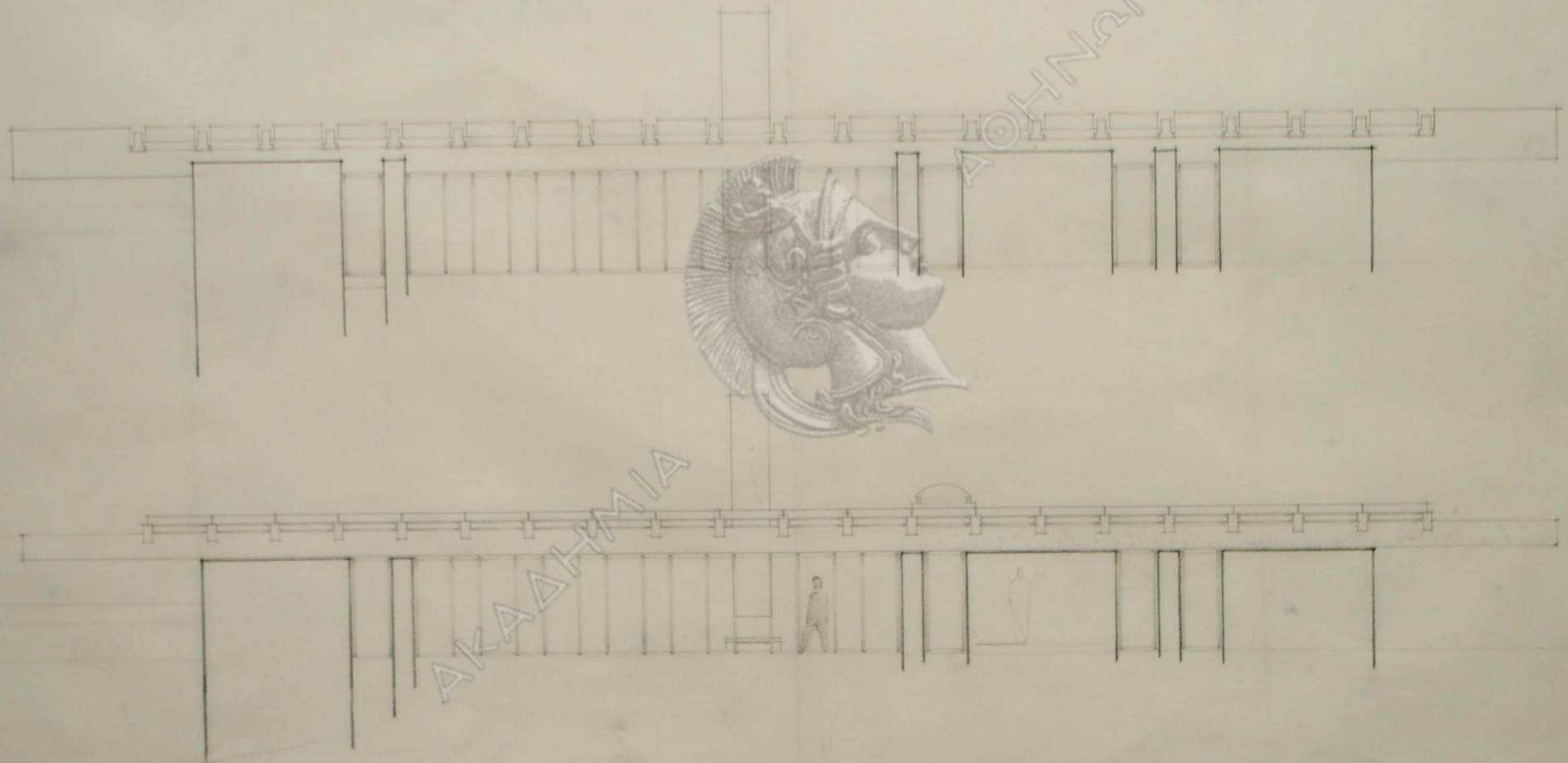






826
92
161
76

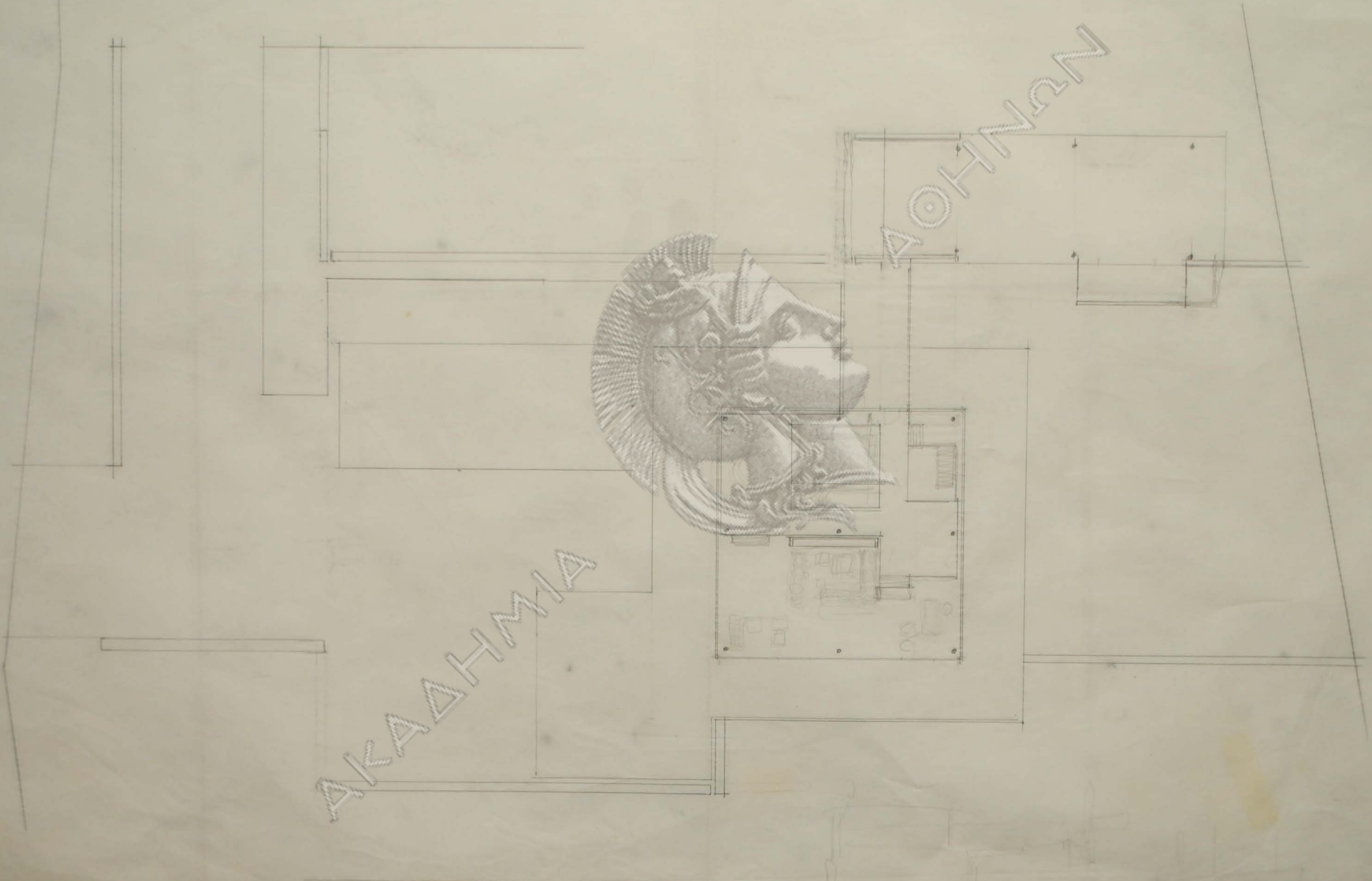




AKADEMIA

ΑΘΗΝΑΝ

172

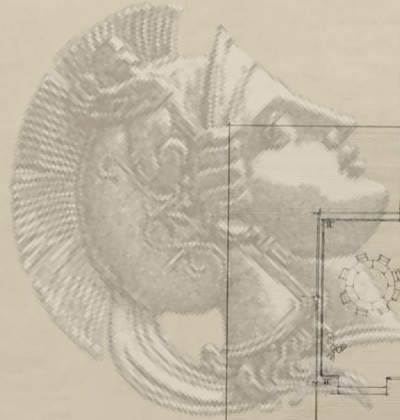


AKADHMIA

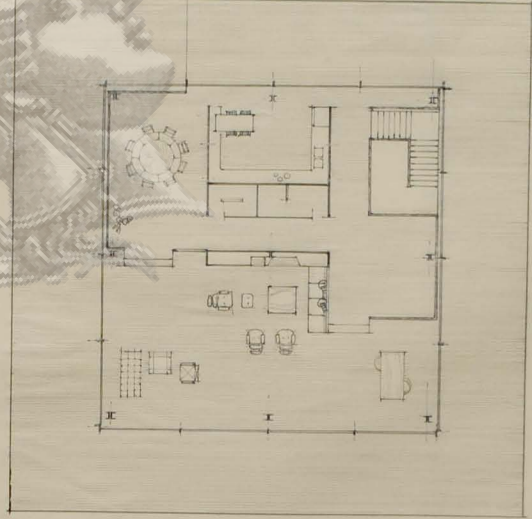
AKADHMIA

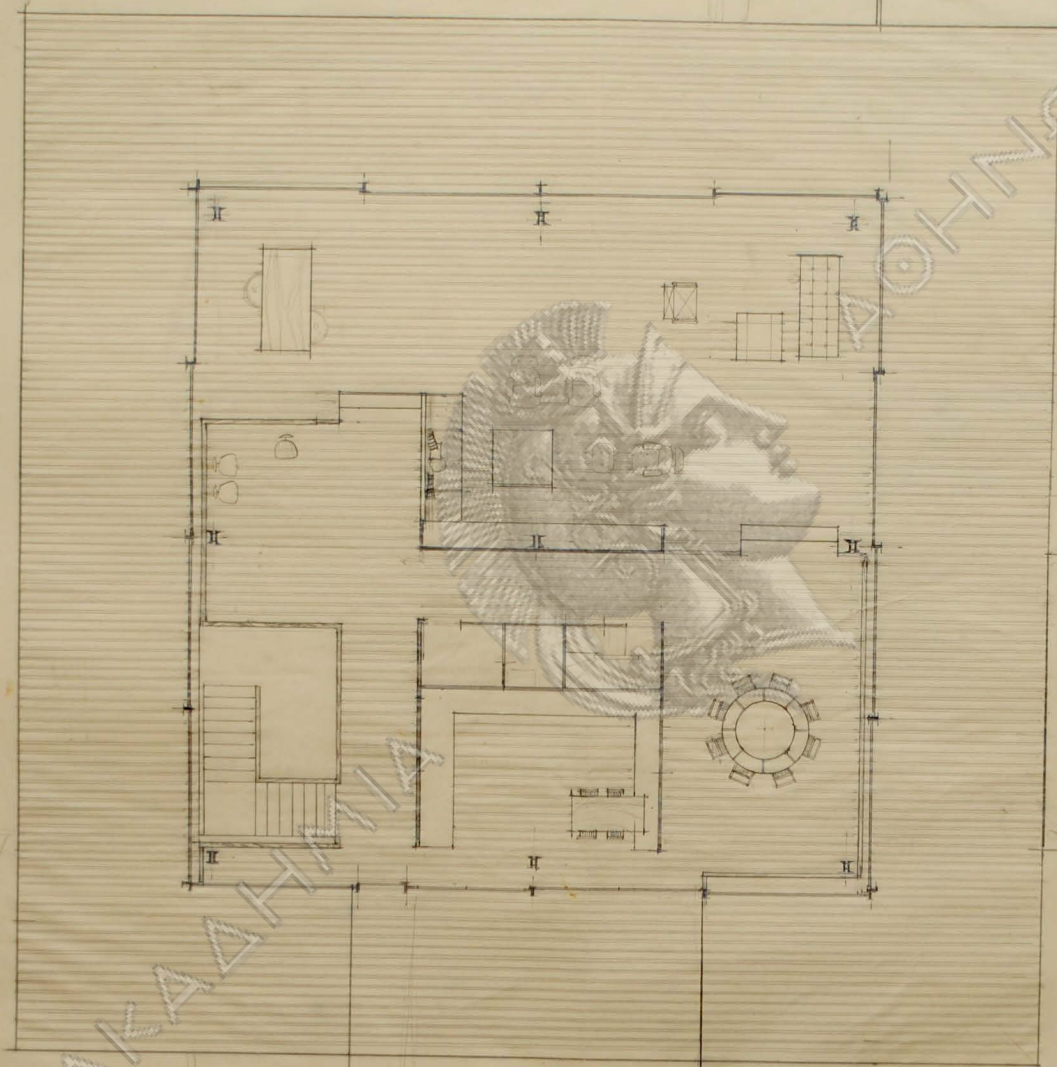
AKADHMIA
AKADHMIA
AKADHMIA

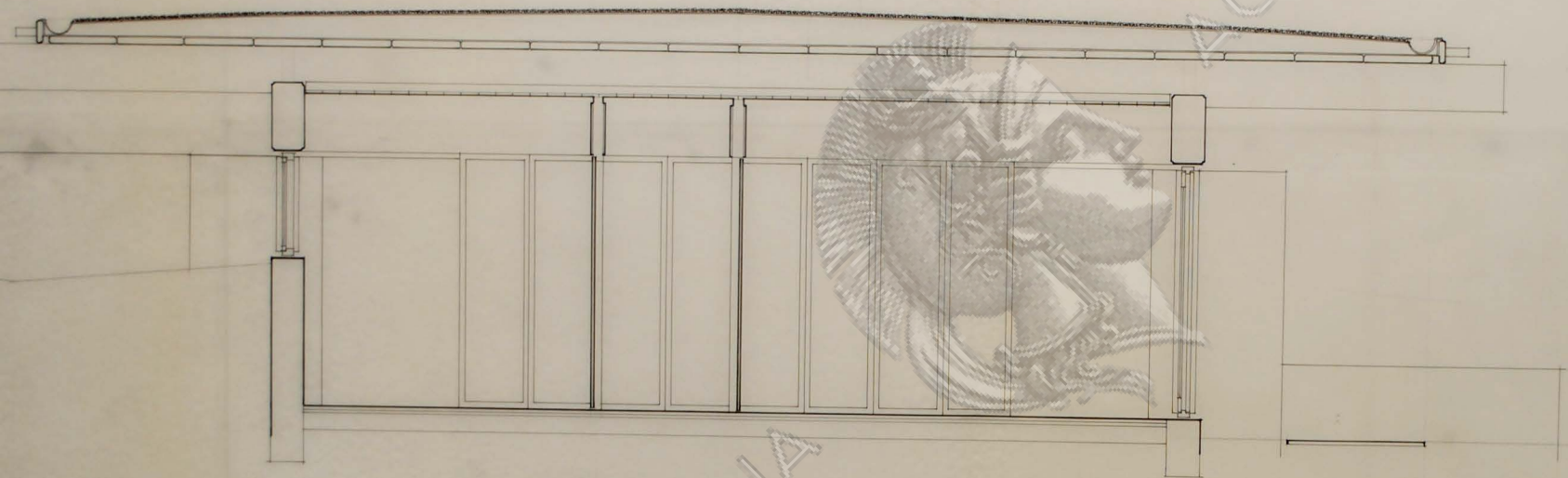
ΑΚΑΔΗΜΙΑ



ΔΙΟΝΥΣΙΟΝ

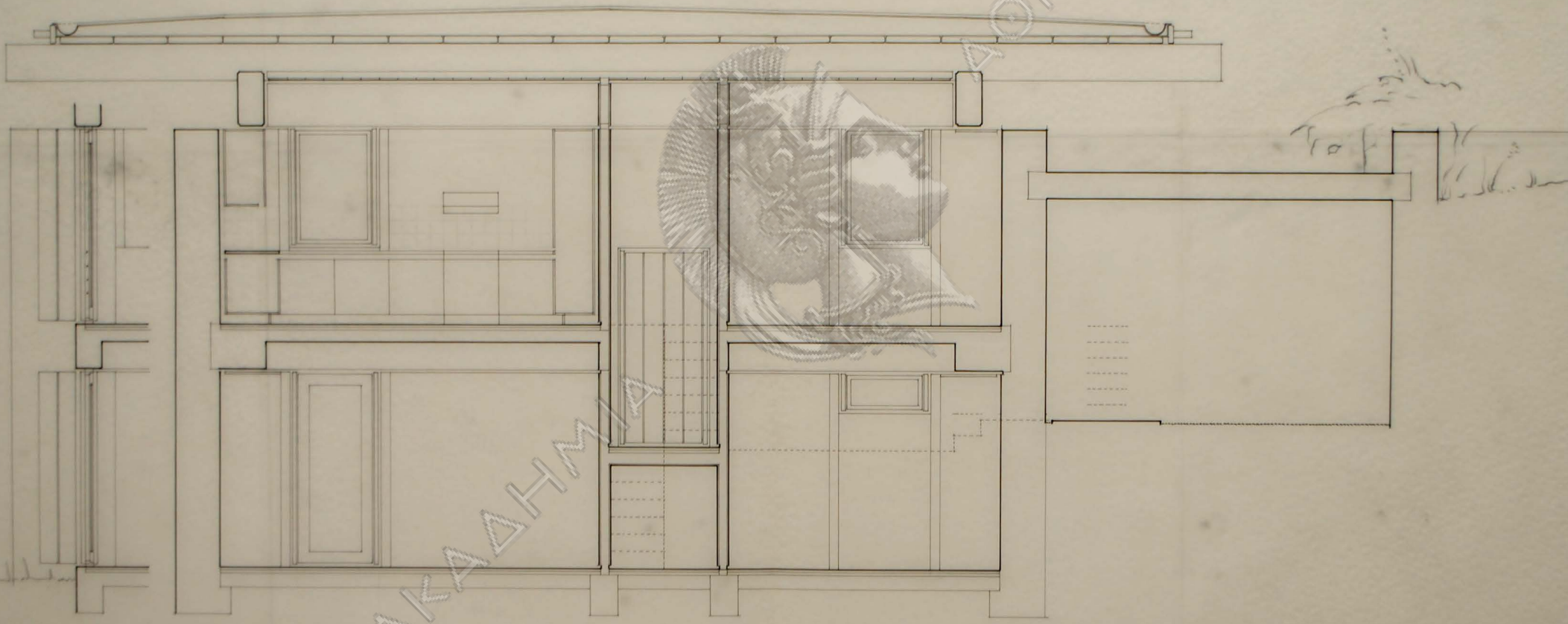






AKADHMA

JOHNN



AKADHMA

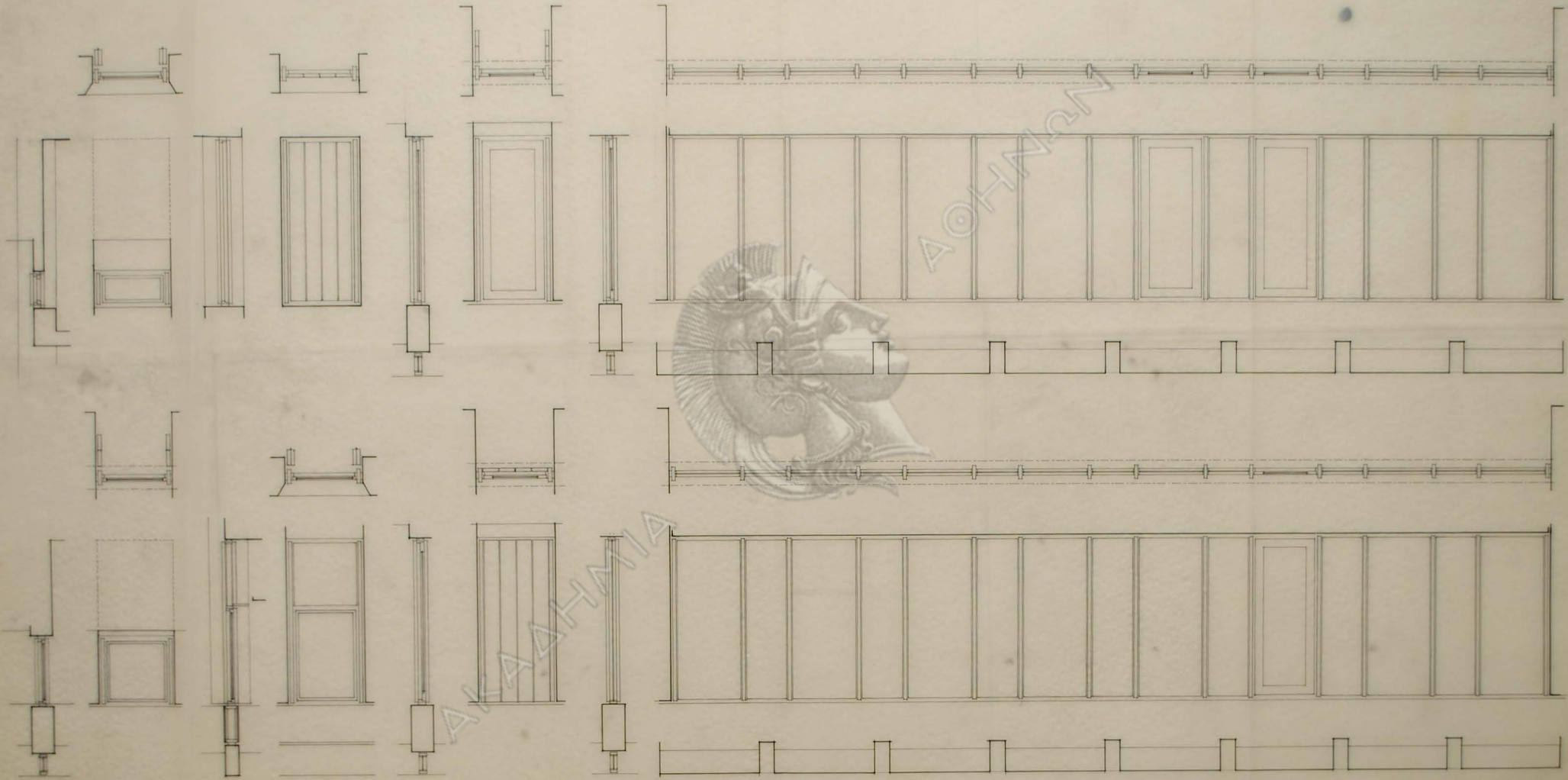
NUHGHAN

Handwritten notes and sketches in the top right corner, including a small sketch of a building or structure.

111

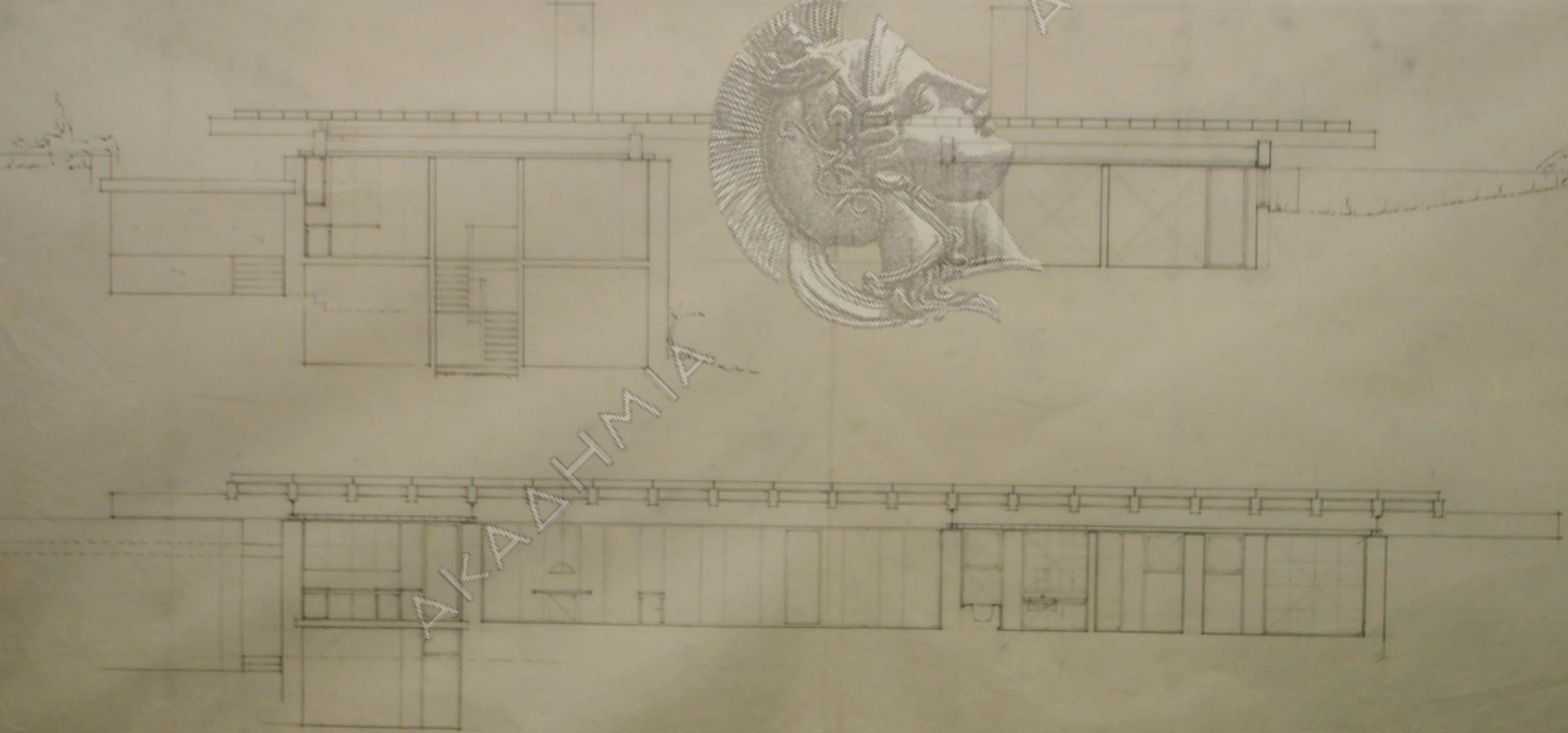
21

11



AKAATHAIA

AKAATHAIA



AKAΔHMIA

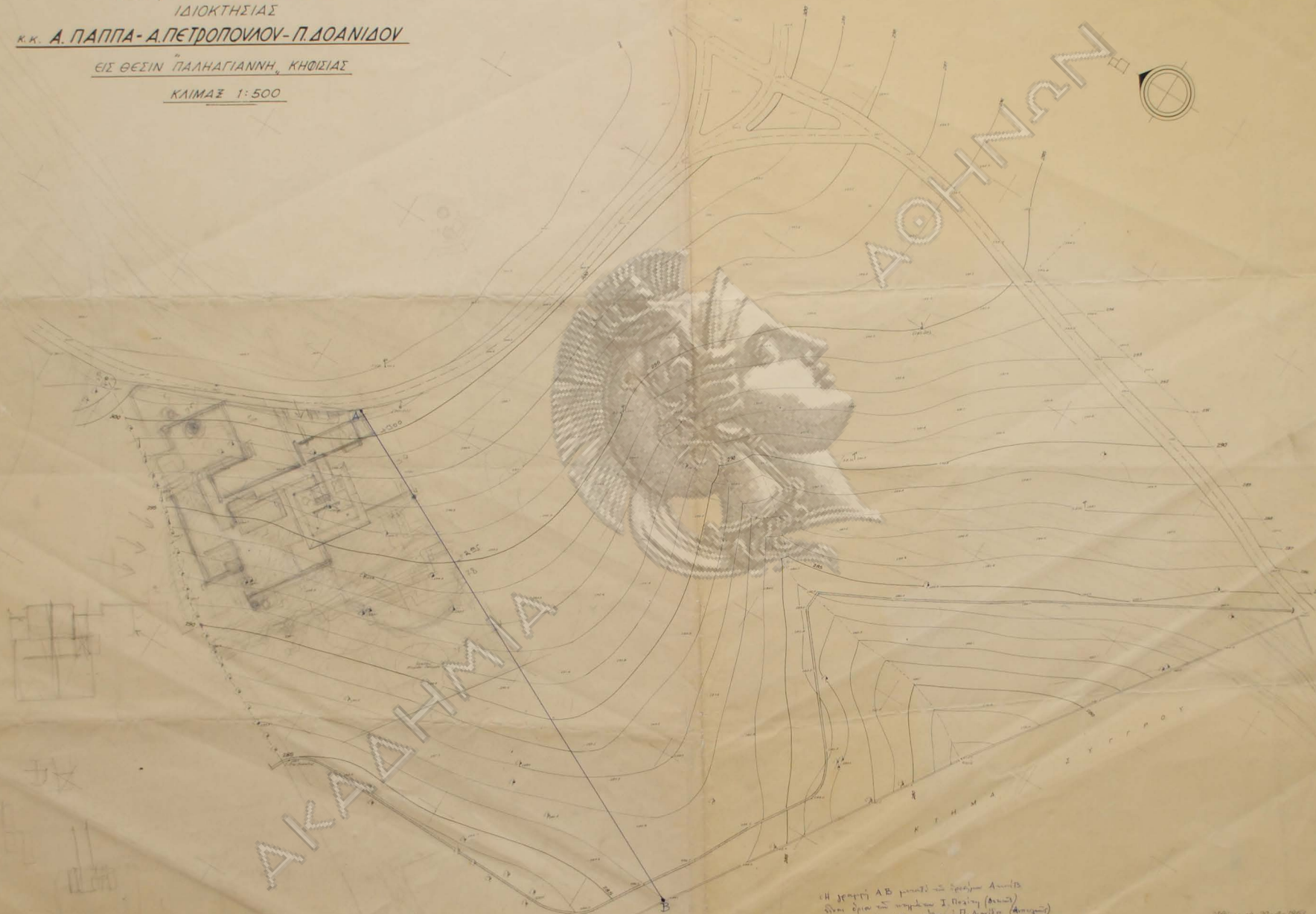
ΝΟΗΜΑΝ

ΤΟΠΟΓΡΑΦΙΚΟΝ ΔΙΑΓΡΑΜΜΑ
ΙΔΙΟΚΤΗΣΙΑΣ

Κ.Κ. Α. ΠΑΠΠΑ - Α. ΠΕΤΡΟΠΟΥΛΟΥ - Π. ΔΟΑΝΙΔΟΥ

ΕΙΣ ΘΕΣΙΝ ΠΑΛΗΓΙΑΝΝΗ, ΚΗΦΙΣΙΑΣ

ΚΛΙΜΑΣ 1:500



ΑΚΑΔΗΤΜΙΑ

ΑΘΗΝΑΝ

Η γραφή ΑΒ είναι με βάση Ακρίβεια
Επίσης είναι με βάση Ι. Παύλου (Ακρίβεια)
Α. Παύλου - Α. Πετροπούλου - Π. Δοανίδη (Ακρίβεια)

ΑΒ είναι 3170 μέτρα επί 1:500
Ε. Η. Παύλου
Κ. Παύλου - Α. Πετροπούλου - Ι. Παύλου
Π. Δοανίδη
Α. Παύλου - Α. Πετροπούλου - Π. Δοανίδη
Α. Παύλου - Α. Πετροπούλου - Π. Δοανίδη

Σχέδιο 20.4.1960
Ε. Η. Παύλου

ΠΑΝΑΤΟΙΧΟΣ - ΚΑΛΙΑΣ
Ε. Η. ΠΑΥΛΟΥ
Α. ΠΑΥΛΟΥ
Α. ΠΕΤΡΟΠΟΥΛΟΥ