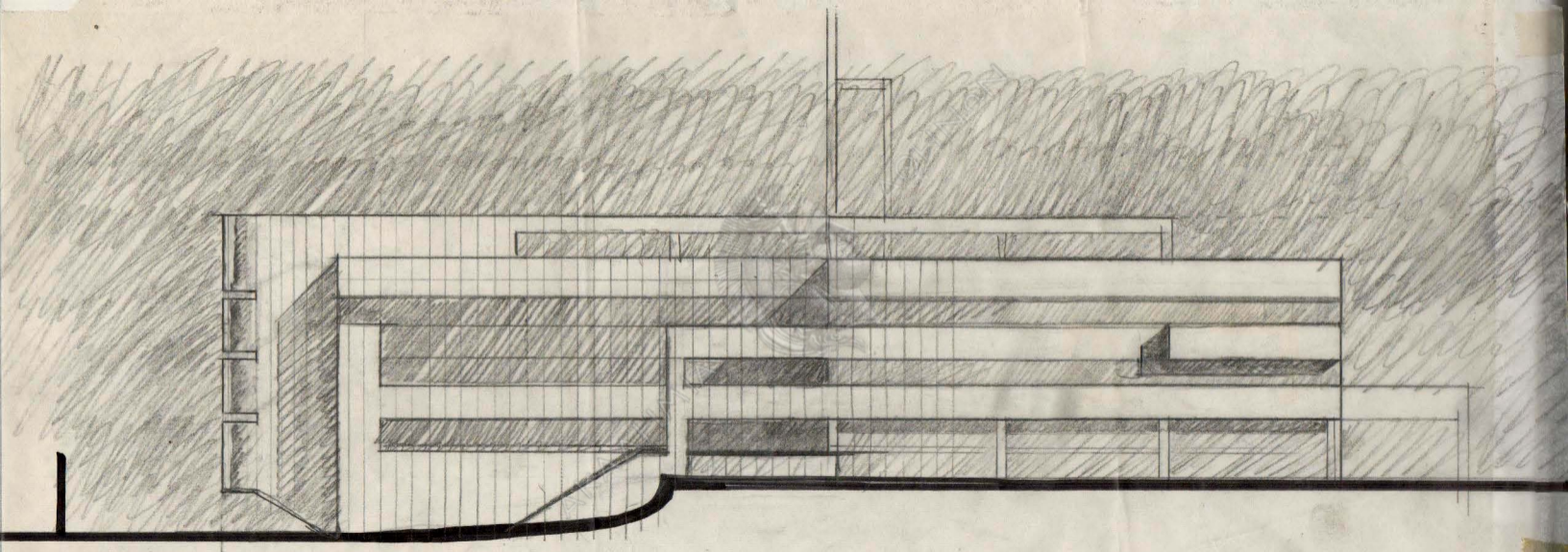
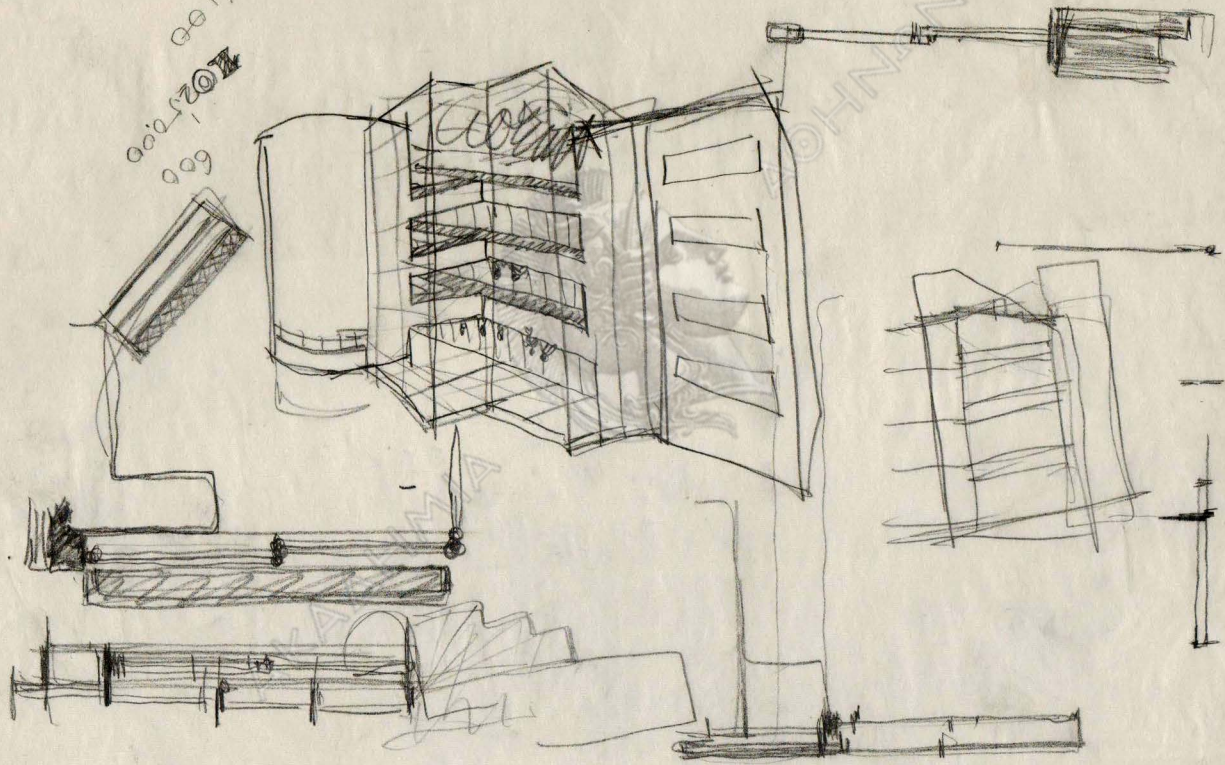
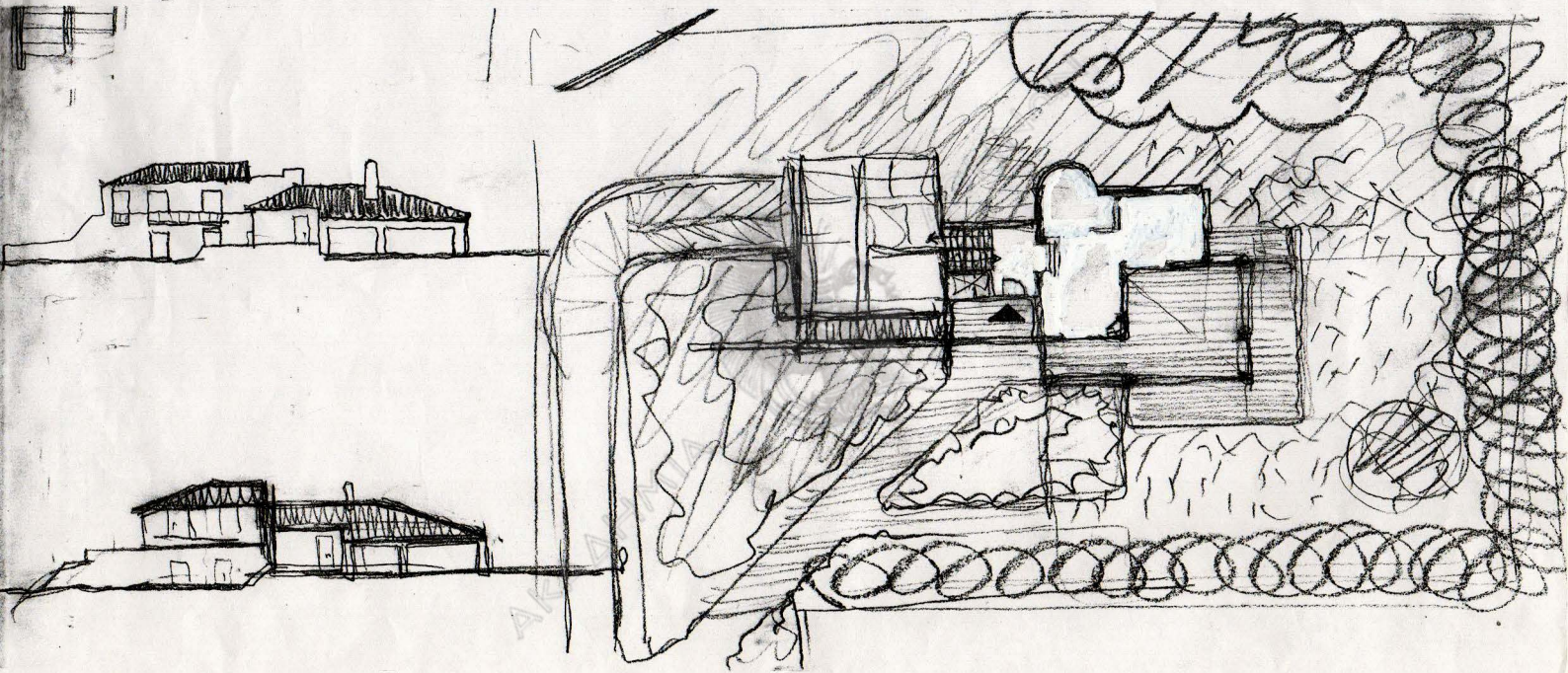


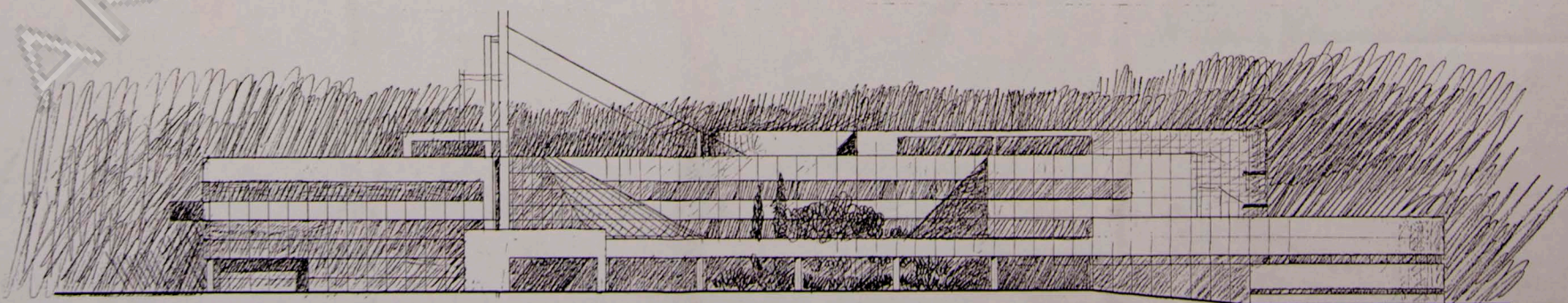
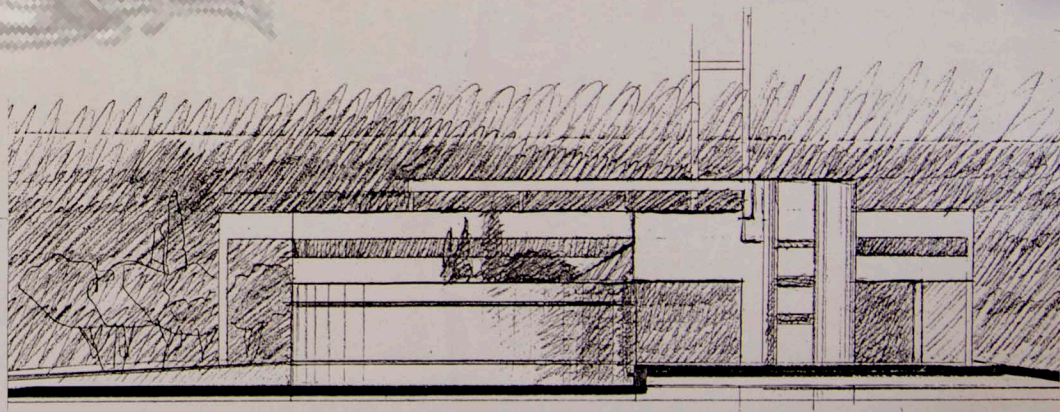
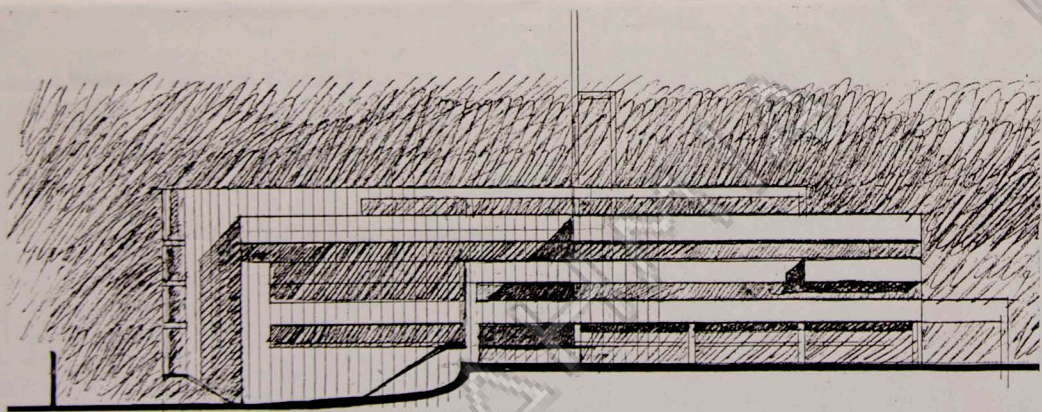
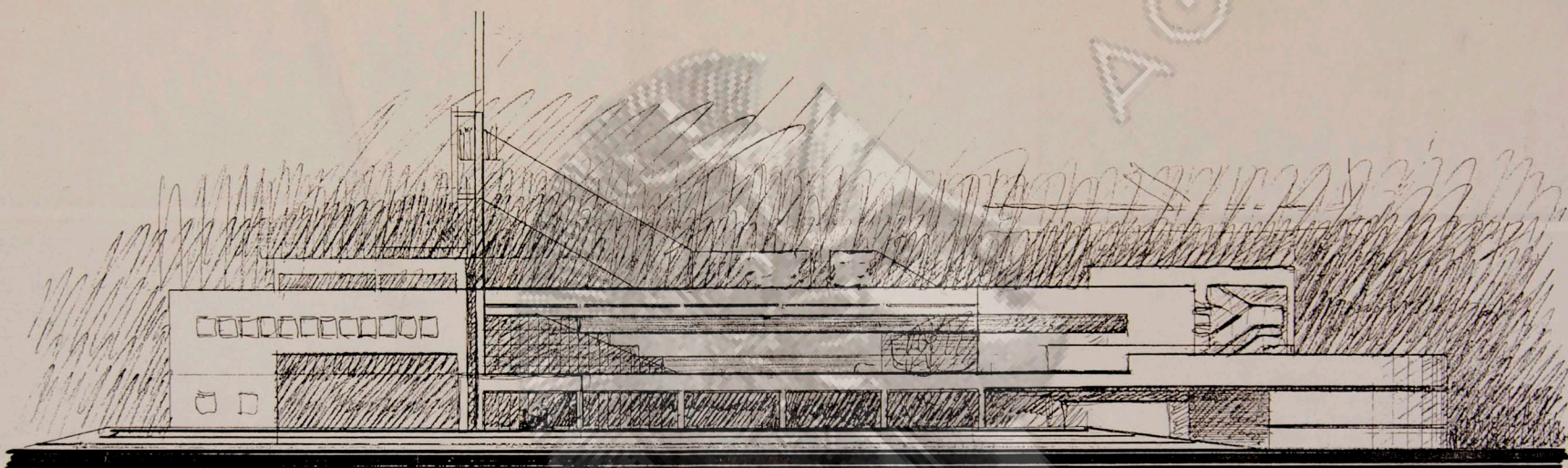
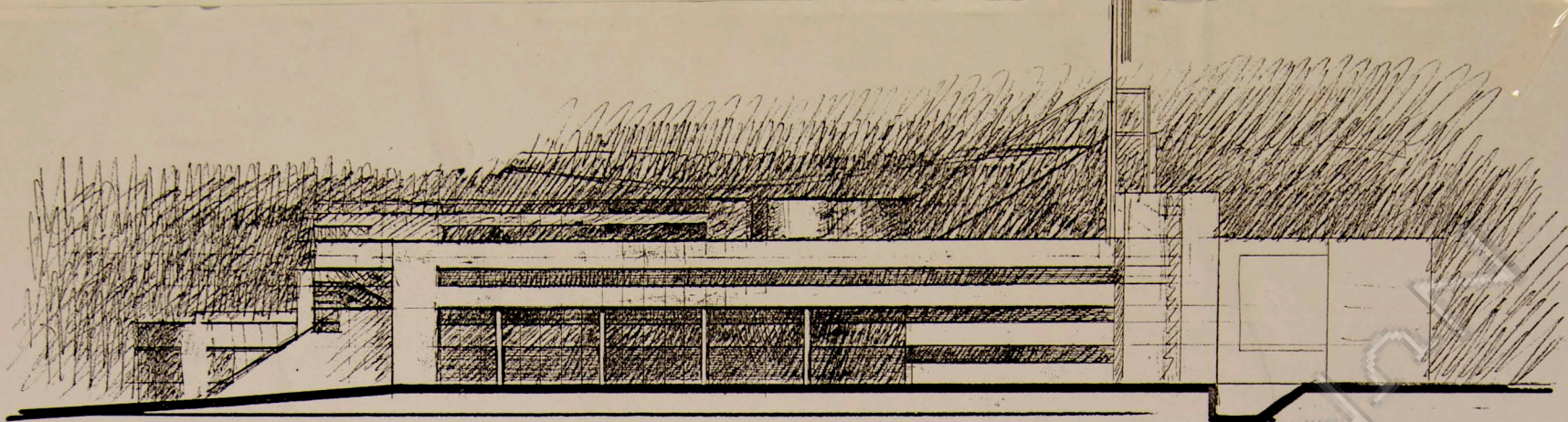
AKAΔHMIA



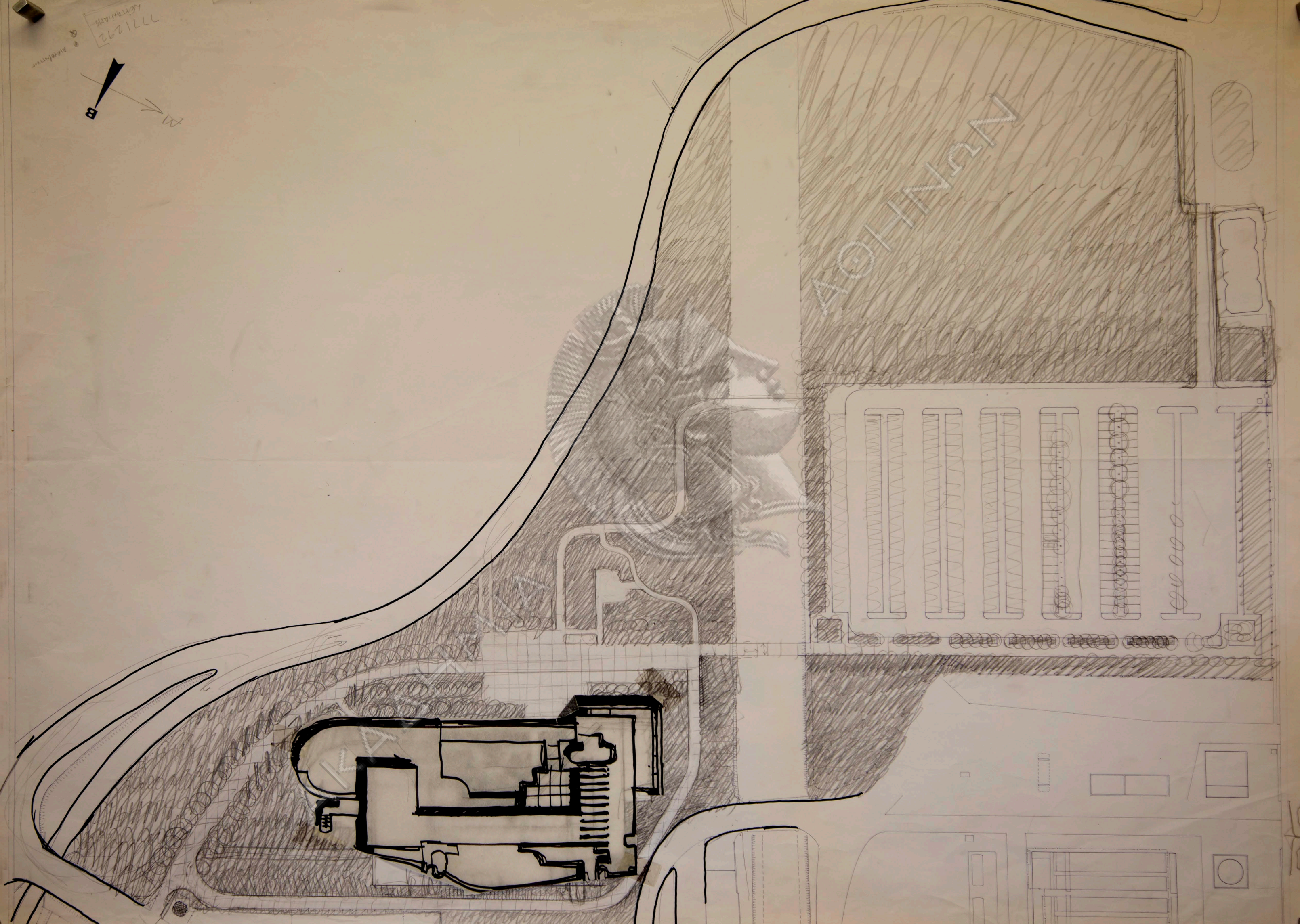
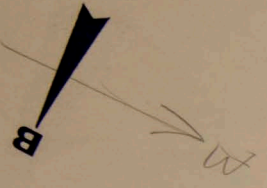
2400
000 2500
000 2000
000 1500

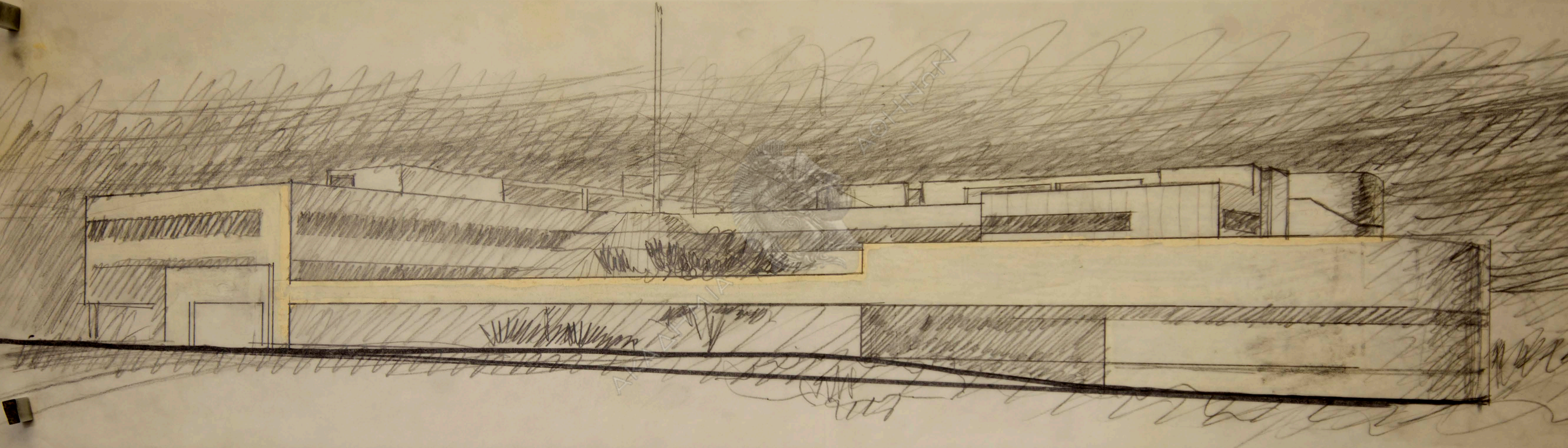


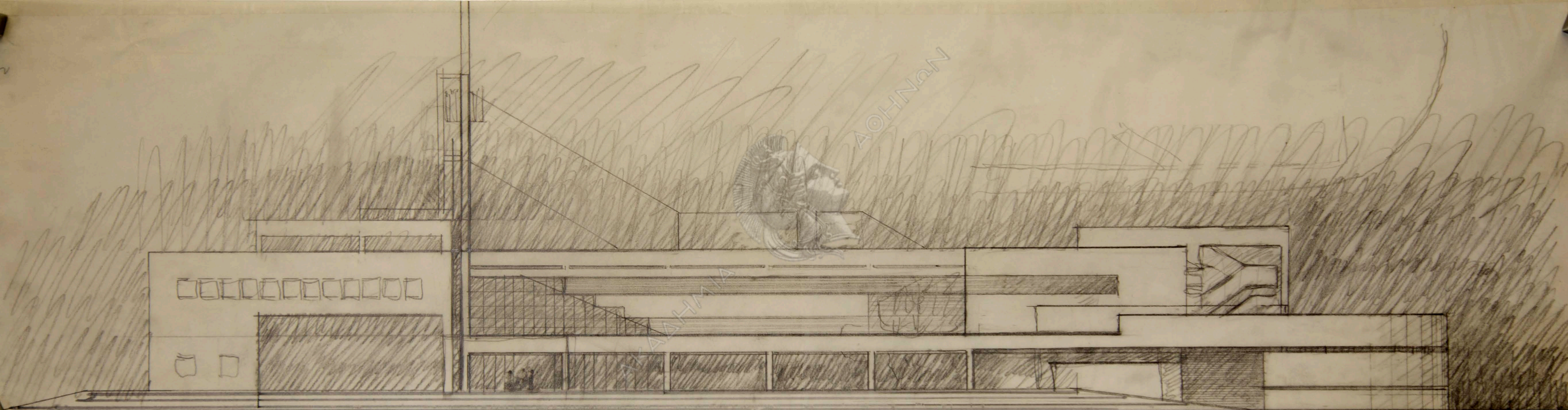


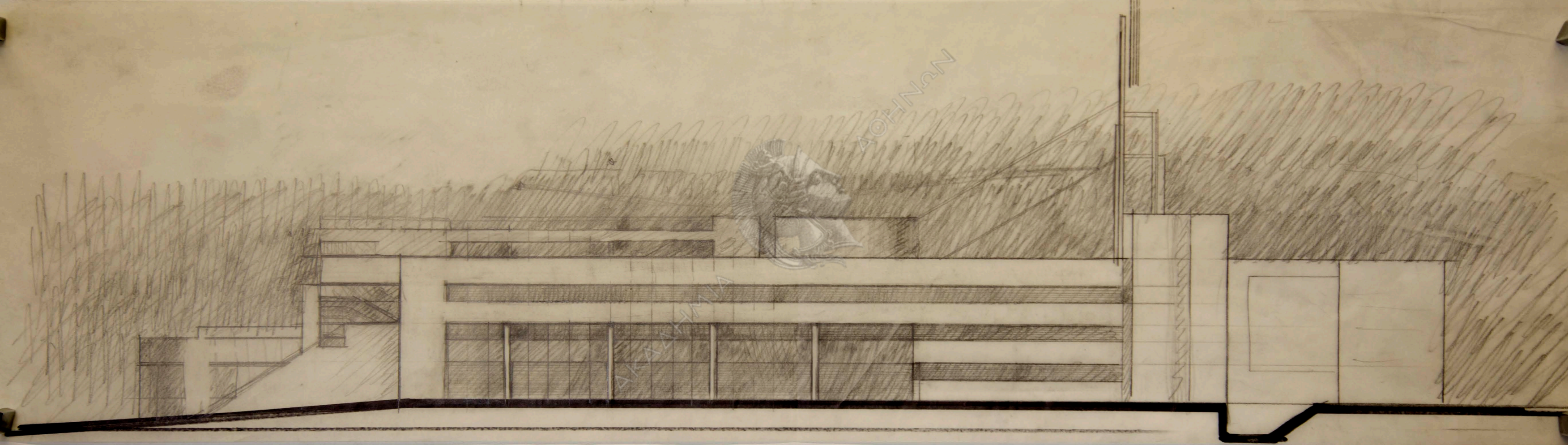


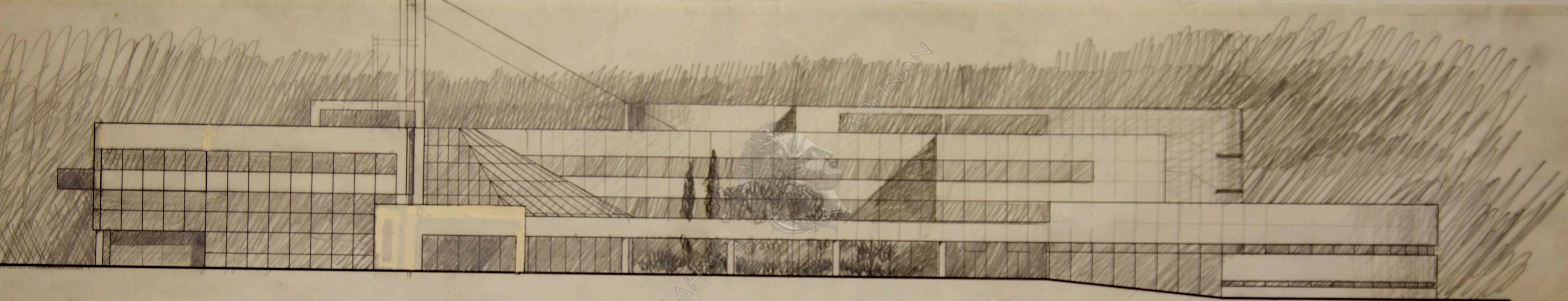
7771292
KCH/AM/18
A/18/11/11







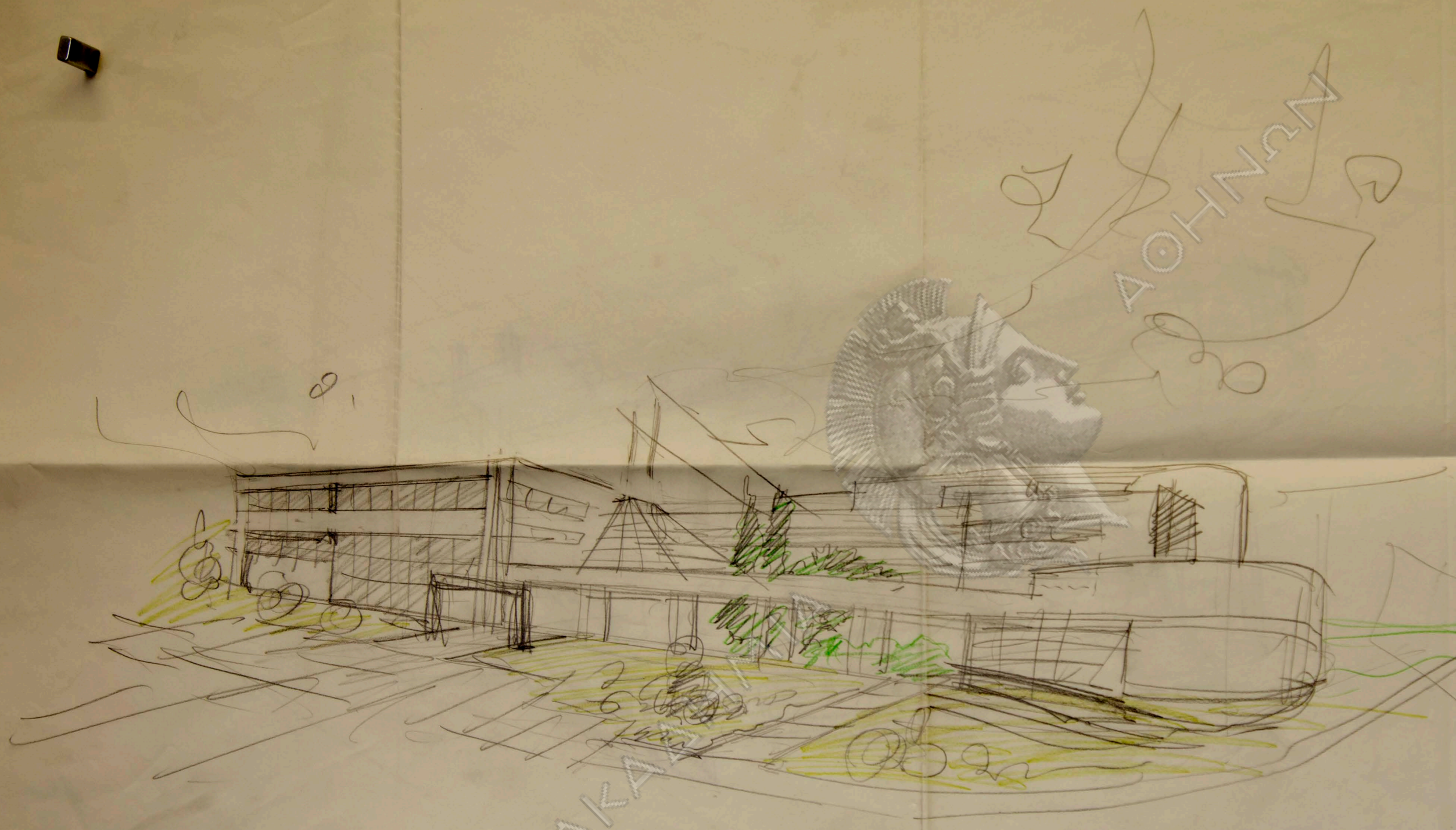




4

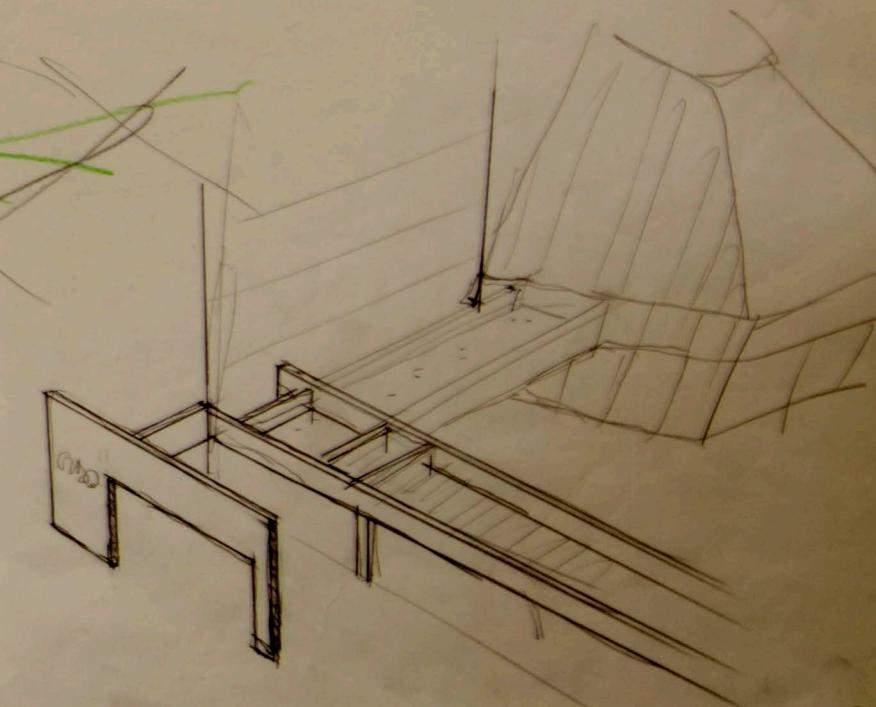
AKADHITI

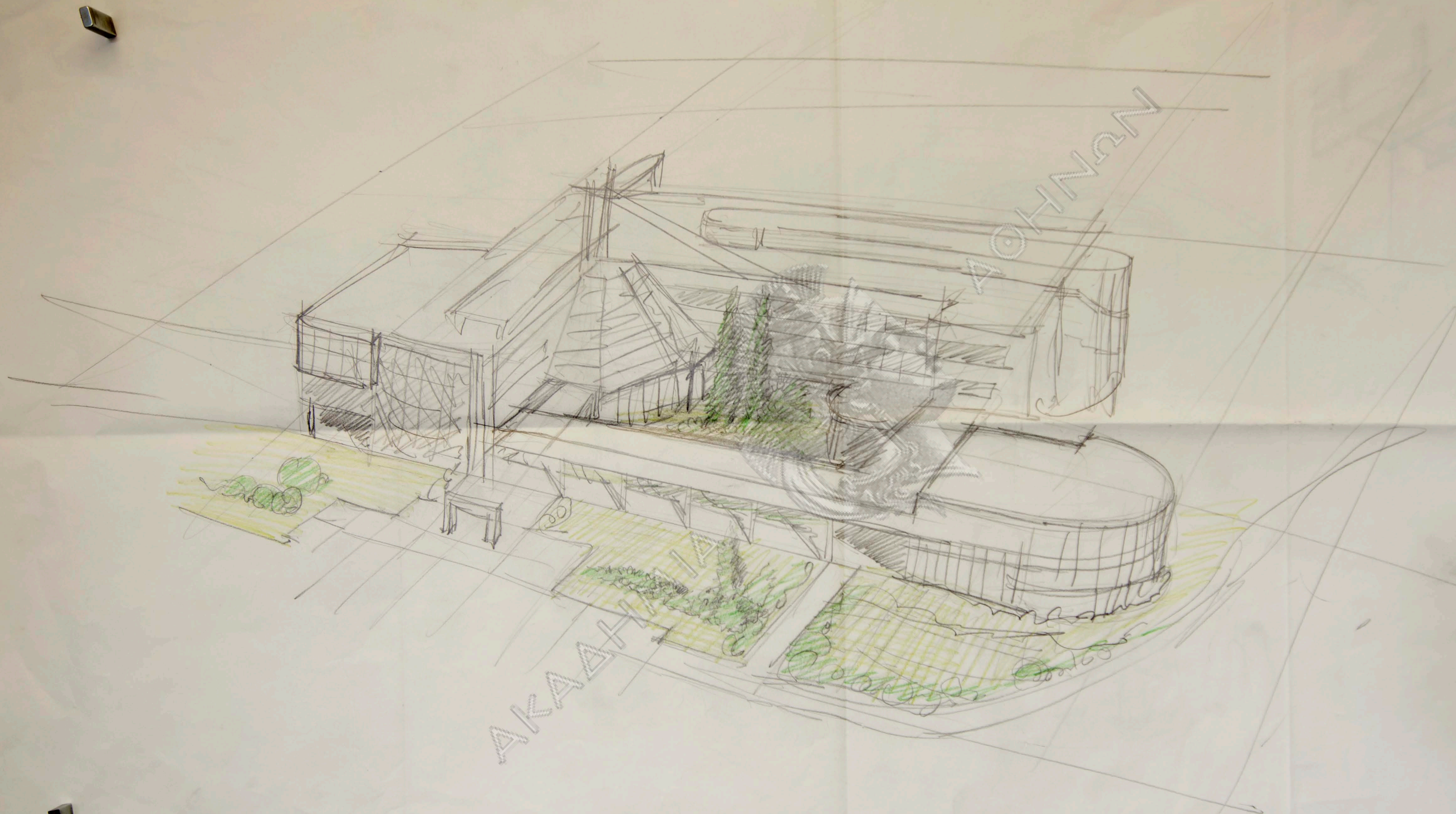
AKADHITI



Handwritten text in a stylized, possibly Cyrillic or Greek script, located above the main sketch. The text is written in a light, sketchy ink.

AKA





AKAATI

AKAATI